

**CLIP170 Recombinant Rabbit mAb**

Catalog: BS47100

Host: Rabbit

Reactivity: Human

**BackGround:**

The protein encoded by this gene links endocytic vesicles to microtubules. This gene is highly expressed in Reed-Sternberg cells of Hodgkin disease. Several transcript variants encoding different isoforms have been found for this gene. [provided by RefSeq, Oct 2011]

**Product:**

Store at -20 °C. Supplied in 50mM Tris-Glycine(pH 7.4), 0.15M NaCl, 40%Glycerol, 0.01% sodium azide and 0.05% BSA. Stable for 12 months from date of receipt.

**Molecular Weight:**

170 kDa

**Swiss-Prot:**

P30622

**Purification&Purity:**

Affinity Purification

**Applications:**

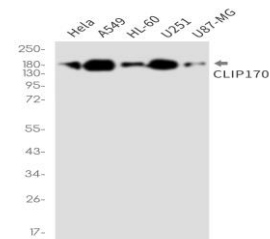
WB: 1:1000  
IHC: 1:50  
ICC/IF: 1:50  
IP: 1:20

**Storage&Stability:**

Store at 4 °C short term. Aliquot and store at -20 °C long term. Avoid freeze-thaw cycles.

**Isotype:**

IgG

**DATA:**

Western blot detection of CLIP170 in HeLa, A549, HL-60, U251, U87-MG cell lysates using CLIP170 antibody (1:1000 diluted).

**Note:**

For research use only, not for use in diagnostic procedure.

**Bioworld Technology, Inc.**

Add: 1660 South Highway 100, Suite 500 St. Louis Park,  
MN 55416, USA.

Email: [info@bioworld.com](mailto:info@bioworld.com)

Tel: 6123263284

Fax: 6122933841

**Bioworld technology, co. Ltd.**

Add: No 9, weidi road Qixia District Nanjing, 210046,  
P. R. China.

Email: [info@biogot.com](mailto:info@biogot.com)

Tel: 0086-025-68037686

Fax: 0086-025-68035151