

AHSG Recombinant Rabbit mAb

Catalog: BS47350

Host: Rabbit

Reactivity: Mouse, Rat

BackGround:

Predicted to enable endopeptidase inhibitor activity and receptor signaling protein tyrosine kinase inhibitor activity. Involved in negative regulation of bone mineralization. Acts upstream of or within ossification. Predicted to be located in Golgi apparatus; collagen-containing extracellular matrix; and extracellular space. Predicted to be part of protein-containing complex. Predicted to be active in extracellular matrix and extracellular region. Is expressed in several structures, including gut; heart; limb segment; reproductive system; and skeletal musculature. Human ortholog(s) of this gene implicated in alopecia-mental retardation syndrome 1; coronary artery disease; and type 2 diabetes mellitus. Orthologous to human AHSG (alpha 2-HS glycoprotein). [provided by Alliance of Genome Resources, Apr 2022]

Product:

Store at -20 °C. Supplied in 50mM Tris-Glycine(pH 7.4), 0.15M NaCl, 40%Glycerol, 0.01% sodium azide and 0.05% BSA. Stable for 12 months from date of receipt.

Molecular Weight:

45-50 kDa

Swiss-Prot:

P29699, P24090

Purification&Purity:

Affinity Purification

Applications:

WB: 1:1000
IHC: 1:200
IP: 1:20

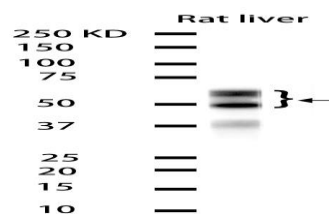
Storage&Stability:

Store at 4 °C short term. Aliquot and store at -20 °C long term. Avoid freeze-thaw cycles.

Isotype:

IgG

DATA:



Western blot analysis of extracts from Rat liver tissue using db11169 at 1:1000.

Note:

For research use only, not for use in diagnostic procedure.

Bioworld Technology, Inc.

Add: 1660 South Highway 100, Suite 500 St. Louis Park, MN 55416, USA.

Email: info@bioworld.com

Tel: 6123263284

Fax: 6122933841

Bioworld technology, co. Ltd.

Add: No 9, weidi road Qixia District Nanjing, 210046, P. R. China.

Email: info@biogot.com

Tel: 0086-025-68037686

Fax: 0086-025-68035151