

SLC25A12 polyclonal antibody

Catalog: BS5616

Host: Rabbit

Reactivity: Human,Rat

BackGround:

Calcium signaling in mitochondria is important in order for it to function in response to a variety of extracellular stimuli. Signaling begins with Ca(2+) entry in mitochondria via the Ca(2+) uniporter followed by Ca(2+) activation of three dehydrogenases in the mitochondrial matrix. ARALAR, the neuronal Ca(2+)-binding mitochondrial aspartate-glutamate carrier, has Ca(2+) binding domains facing the extramitochondrial space and functions in the malate-aspartate NADH shuttle (MAS). ARALAR is encoded by the SLC25A12 gene and is expressed in brain and skeletal muscle. ARALAR is required for the synthesis of brain aspartate and N-acetylaspartatemay and plays a role in myelin formation. It is also essential for the transmission of small Ca(2+) signals to mitochondria via an increase in mitochondrial NADH. In addition, ARALAR is implicated in conferring susceptibility to schizophrenia.

Product:

Rabbit IgG, 1mg/ml in PBS with 0.02% sodium azide, 50% glycerol, pH7.2

Molecular Weight:

~ 74 kDa

Swiss-Prot:

O75746

Purification&Purity:

The antibody was affinity-purified from rabbit antiserum by affinity-chromatography using epitope-specific im-

munogen and the purity is > 95% (by SDS-PAGE).

Applications:

WB: 1:500~1:1000

IHC: 1:50~1:200

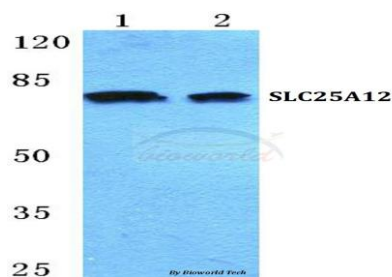
Storage&Stability:

Store at 4 °C short term. Aliquot and store at -20 °C long term. Avoid freeze-thaw cycles.

Specificity:

SLC25A12 polyclonal antibody detects endogenous levels of SLC25A12 protein.

DATA:



Western blot (WB) analysis of SLC25A12 polyclonal antibody at 1:500 dilution

Lane1:Jurkat cell lysate

Lane2:Rat liver tissue lysate

Note:

For research use only, not for use in diagnostic procedure.

Bioworld Technology, Inc.

Add: 1660 South Highway 100, Suite 500 St. Louis Park, MN 55416, USA.

Email: info@bioworld.com

Tel: 6123263284

Fax: 6122933841

Bioworld technology, co. Ltd.

Add: No 9, weidi road Qixia District Nanjing, 210046, P. R. China.

Email: info@biogot.com

Tel: 0086-025-68037686

Fax: 0086-025-68035151