

EEF1B2 polyclonal antibody

Catalog: BS5708

Host: Rabbit

Reactivity: Human, Mouse, Rat

BackGround:

EF-1 (elongation factor-1) is a multi-protein complex that is responsible for the delivery of aminoacyl-tRNAs to the ribosome. The EF-1 protein complex is composed of four subunits: EF-1 α , EF-1 β , EF-1 δ and EF-1 γ . EF-1 β is a 225 amino acid member of the EF-1 β /EF-1 δ protein family and contains one GST C-terminal domain. Both EF-1 β and EF-1 δ stimulate the exchange of GDP bound to EF-1 α to GTP. Phosphorylation of EF-1 β affects the GDP/GTP exchange rate. Alternative splicing events of the gene that encodes EF-1 β result in three transcript variants that differ only in the 5' UTR.

Product:

Rabbit IgG, 1mg/ml in PBS with 0.02% sodium azide, 50% glycerol, pH7.2

Molecular Weight:

~ 25 kDa

Swiss-Prot:

P24534

Purification&Purity:

The antibody was affinity-purified from rabbit antiserum by affinity-chromatography using epitope-specific immunogen and the purity is > 95% (by SDS-PAGE).

Applications:

WB: 1:500~1:1000

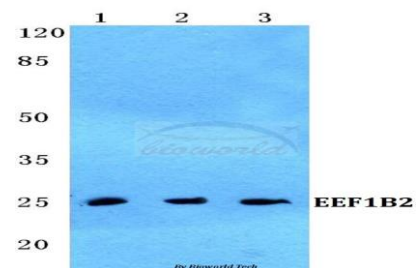
Storage&Stability:

Store at 4 °C short term. Aliquot and store at -20 °C long term. Avoid freeze-thaw cycles.

Specificity:

EEF1B2 polyclonal antibody detects endogenous levels of EEF1B2 protein.

DATA:



Western blot (WB) analysis of EEF1B2 polyclonal antibody at 1:500 dilution

Lane1:HepG2 cell lysate

Lane2:Raw264.7 cell lysate

Lane3:H9C2 cell lysate

Note:

For research use only, not for use in diagnostic procedure.

Bioworld Technology, Inc.

Add: 1660 South Highway 100, Suite 500 St. Louis Park, MN 55416, USA.

Email: info@bioworld.com

Tel: 6123263284

Fax: 6122933841

Bioworld technology, co. Ltd.

Add: No 9, weidi road Qixia District Nanjing, 210046, P. R. China.

Email: info@biogot.com

Tel: 0086-025-68037686

Fax: 0086-025-68035151