

EWSR1 polyclonal antibody

Catalog: BS5715

Host: Rabbit

Reactivity: Human

BackGround:

EWS is a nuclear RNA-binding protein. As a result of chromosome translocation, the EWS gene is fused to a variety of transcription factors, including ATF-1 in human neoplasias. In the Ewing family of tumors, the N-terminal domain of EWS is fused to the DNA-binding domain of various ETS transcription factors, including Fli-1, Erg, ETV1, E1AF and FEV. The EWS/Fli-1 chimeric protein acts as a more potent transcriptional activator than Fli-1 and can promote cell transformation. Two functional regions have been identified in EWS; an amino-terminal region (domain A), that has little transactivation activity but transforms efficiently when fused to Fli-1, and a distal region (domain B), which shows transactivation activity but transforms less efficiently when fused to Fli-1.

Product:

Rabbit IgG, 1mg/ml in PBS with 0.02% sodium azide, 50% glycerol, pH7.2

Molecular Weight:

~ 95 kDa

Swiss-Prot:

Q01844

Purification&Purity:

The antibody was affinity-purified from rabbit antiserum by affinity-chromatography using epitope-specific im-

munogen and the purity is > 95% (by SDS-PAGE).

Applications:

WB: 1:500~1:1000

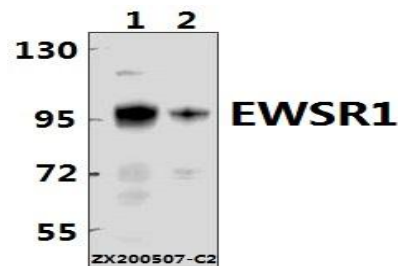
Storage&Stability:

Store at 4 °C short term. Aliquot and store at -20 °C long term. Avoid freeze-thaw cycles.

Specificity:

EWSR1 polyclonal antibody detects endogenous levels of EWSR1 protein.

DATA:



Western blot (WB) analysis of EWSR1 pAb at 1:2000 dilution

Lane1:SGC7901 whole cell lysate(40ug)

Lane2:PC3 whole cell lysate(40ug)

Note:

For research use only, not for use in diagnostic procedure.

Bioworld Technology, Inc.

Add: 1660 South Highway 100, Suite 500 St. Louis Park, MN 55416, USA.

Email: info@bioworld.com

Tel: 6123263284

Fax: 6122933841

Bioworld technology, co. Ltd.

Add: No 9, weidi road Qixia District Nanjing, 210046, P. R. China.

Email: info@biogot.com

Tel: 0086-025-68037686

Fax: 0086-025-68035151