

## GALK1 polyclonal antibody

Catalog: BS5729

Host: Rabbit

Reactivity: Human, Mouse, Rat

### BackGround:

Galactose kinase (GALK1), also often designated galactokinase, is important in the first step of the galactose metabolism pathway. GALK1, which belongs to the GHMP kinase family of proteins, is a crucial enzyme for galactose metabolism. Defects in the gene encoding for galactose kinase, GALK1, can cause galactosemia II, an autosomal recessive disorder characterized by congenital cataracts during infancy, often within the first two weeks of life. In the adult population it can cause presenile cataracts that are secondary to accumulation of galactitol in the lens of the eye.

### Product:

Rabbit IgG, 1mg/ml in PBS with 0.02% sodium azide, 50% glycerol, pH7.2

### Molecular Weight:

~ 42 kDa

### Swiss-Prot:

P51570

### Purification&Purity:

The antibody was affinity-purified from rabbit antiserum by affinity-chromatography using epitope-specific immunogen and the purity is > 95% (by SDS-PAGE).

### Applications:

WB: 1:500~1:1000

IHC: 1:50~1:200

ICC: 1:50~1:200

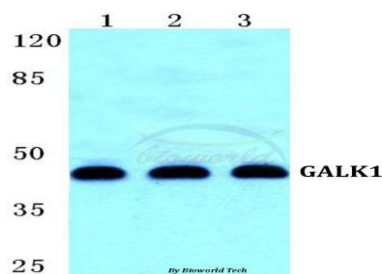
### Storage&Stability:

Store at 4 °C short term. Aliquot and store at -20 °C long term. Avoid freeze-thaw cycles.

### Specificity:

GALK1 polyclonal antibody detects endogenous levels of GALK1 protein.

### DATA:



Western blot (WB) analysis of GALK1 polyclonal antibody at 1:500 dilution

Lane1:HEK293T cell lysate

Lane2:sp2/0 cell lysate

Lane3:Rat liver tissue lysate

### Note:

For research use only, not for use in diagnostic procedure.

### Bioworld Technology, Inc.

Add: 1660 South Highway 100, Suite 500 St. Louis Park, MN 55416, USA.

Email: [info@bioworld.com](mailto:info@bioworld.com)

Tel: 6123263284

Fax: 6122933841

### Bioworld technology, co. Ltd.

Add: No 9, weidi road Qixia District Nanjing, 210046, P. R. China.

Email: [info@biogot.com](mailto:info@biogot.com)

Tel: 0086-025-68037686

Fax: 0086-025-68035151