

GPR19 polyclonal antibody

Catalog: BS5745

Host: Rabbit

Reactivity: Human, Mouse, Rat

BackGround:

G protein-coupled receptors (GPRs or GPCRs), also known as seven transmembrane receptors, heptahelical receptors, or 7TM receptors, are members of the largest protein family and play a role in many different stimulus-response pathways. G-protein coupled receptors mediate extracellular signals into intracellular signals (G-protein activation). They respond to a great variety of signaling molecules, including hormones, neurotransmitters and other proteins and peptides. GPR proteins are integral seven-pass membrane proteins with some conserved amino acid regions. GPR19, an orphan receptor, shows elevated expression during embryonic development of the nervous system as well as in specific regions of adult mouse brain, including the olfactory bulb, the hippocampus, hypothalamic nuclei and the cerebellum.

Product:

Rabbit IgG, 1mg/ml in PBS with 0.02% sodium azide, 50% glycerol, pH7.2

Molecular Weight:

~ 48 kDa

Swiss-Prot:

Q15760

Purification&Purity:

The antibody was affinity-purified from rabbit antiserum by affinity-chromatography using epitope-specific immunogen and the purity is > 95% (by SDS-PAGE).

Applications:

WB: 1:500~1:1000

ICC: 1:50~1:200

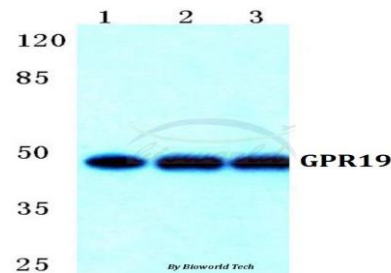
Storage&Stability:

Store at 4 °C short term. Aliquot and store at -20 °C long term. Avoid freeze-thaw cycles.

Specificity:

GPR19 polyclonal antibody detects endogenous levels of GPR19 protein.

DATA:



Western blot (WB) analysis of GPR19 polyclonal antibody at 1:500 dilution

Lane1:Hela cell lysate

Lane2:NIH-3T3 cell lysate

Lane3:H9C2 cell lysate

Note:

For research use only, not for use in diagnostic procedure.

Bioworld Technology, Inc.

Add: 1660 South Highway 100, Suite 500 St. Louis Park, MN 55416, USA.

Email: info@bioworld.com

Tel: 6123263284

Fax: 6122933841

Bioworld technology, co. Ltd.

Add: No 9, weidi road Qixia District Nanjing, 210046, P. R. China.

Email: info@biogot.com

Tel: 0086-025-68037686

Fax: 0086-025-68035151