

HEC1 polyclonal antibody

Catalog: BS5755

Host: Rabbit

Reactivity: Human, Mouse, Rat

BackGround:

Highly expressed in cancer (Hec1) is a coiled-coil-enriched protein expressed abundantly in the S and M phases of rapidly dividing cells where it localizes to the kinetochores. Hec1 is involved in spindle checkpoint signaling. Hec1 is not expressed in terminal differentiated cells. Hec1 is expressed in tissues with high mitotic rates including testis, spleen and thymus. Hec1 is also found in the late S to M phases of bladder carcinoma cells. In dividing cells, Hec1 is required for the recruitment of Mps1 kinase and MAD1/MAD2 complexes to the kinetochores. The phosphorylation of Hec1 on Serine 165 by Nek2 is essential for faithful chromosome segregation. The binding of retinoblastoma protein to Hec1 also increases the fidelity of chromosomal segregation.

Product:

Rabbit IgG, 1mg/ml in PBS with 0.02% sodium azide, 50% glycerol, pH7.2

Molecular Weight:

~ 74 kDa

Swiss-Prot:

O14777

Purification&Purity:

The antibody was affinity-purified from rabbit antiserum by affinity-chromatography using epitope-specific immunogen and the purity is > 95% (by SDS-PAGE).

Applications:

WB: 1:500~1:1000

IF: 1:50~1:200

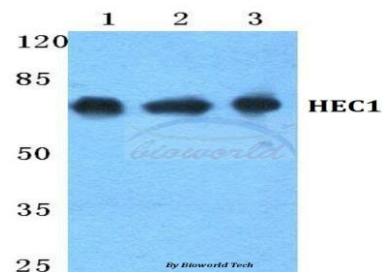
Storage&Stability:

Store at 4 °C short term. Aliquot and store at -20 °C long term. Avoid freeze-thaw cycles.

Specificity:

HEC1 polyclonal antibody detects endogenous levels of HEC1 protein.

DATA:



Western blot (WB) analysis of HEC1 polyclonal antibody at 1:500 dilution

Lane1:HEK293T cell lysate

Lane2:sp2/0 cell lysate

Lane3:H9C2 cell lysate

Note:

For research use only, not for use in diagnostic procedure.

Bioworld Technology, Inc.

Add: 1660 South Highway 100, Suite 500 St. Louis Park, MN 55416, USA.

Email: info@bioworld.com

Tel: 6123263284

Fax: 6122933841

Bioworld technology, co. Ltd.

Add: No 9, weidi road Qixia District Nanjing, 210046, P. R. China.

Email: info@biogot.com

Tel: 0086-025-68037686

Fax: 0086-025-68035151