

KV β .3 polyclonal antibody

Catalog: BS5780

Host: Rabbit

Reactivity: Human, Mouse, Rat

Background:

Voltage-gated K⁺ channels in the plasma membrane control the repolarization and the frequency of action potentials in neurons, muscles and other excitable cells. The KV gene family encodes more than 30 proteins that comprise the subunits of the K⁺ channels, and they vary in their gating and permeation properties, subcellular distribution and expression patterns. Functional KV channels assemble as tetramers consisting of pore-forming α subunits (KV), which include the KV1, KV2, KV3 and KV4 proteins, and accessory or KV-subunits that modify the gating properties of the coexpressed KV subunits. KV β .3 is an accessory K⁺ channel protein which regulates the activity of the pore-forming α subunit and alters the functional properties of Kv1.5. KV β .3 localizes to the cytoplasm and is expressed in the brain, with highest expression detected in the cerebellum, and weakest expression seen in the frontal and temporal lobes. No KV β .3 expression is detected in the heart, spinal cord, lung, liver, kidney, pancreas, placenta or skeletal muscle.

Product:

Rabbit IgG, 1mg/ml in PBS with 0.02% sodium azide, 50% glycerol, pH7.2

Molecular Weight:

~ 44 kDa

Swiss-Prot:

O43448

Purification&Purity:

The antibody was affinity-purified from rabbit antiserum by affinity-chromatography using epitope-specific immunogen and the purity is > 95% (by SDS-PAGE).

Applications:

WB: 1:500~1:1000

IHC: 1:50~1:200

Storage&Stability:

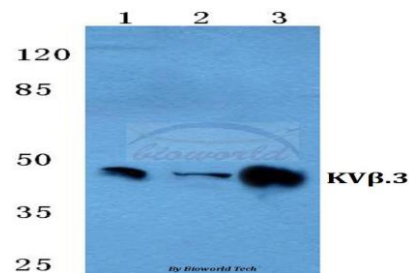
Store at 4 °C short term. Aliquot and store at -20 °C long

term. Avoid freeze-thaw cycles.

Specificity:

KV β .3 polyclonal antibody detects endogenous levels of KV β .3 protein.

DATA:

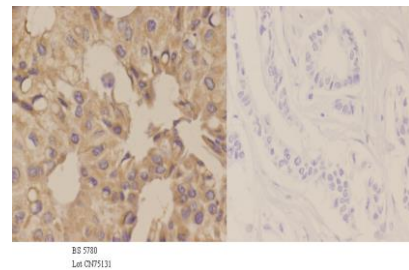


Western blot (WB) analysis of KV β .3 polyclonal antibody at 1:500 dilution

Lane1:THP-1 cell lysate

Lane2:Rat brain tissue lysate

Lane3:Rat kidney tissue lysate



Immunohistochemistry (IHC) analyzes of KV β .3 pAb in paraffin-embedded human breast carcinoma tissue at 1:50. showing cell membrane staining. Negative control (the right) Using PBS instead of primary antibody, secondary antibody is Goat Anti-Rabbit IgG-biotin followed by avidin-peroxidase.

Note:

For research use only, not for use in diagnostic procedure.

Bioworld Technology, Inc.

Add: 1660 South Highway 100, Suite 500 St. Louis Park, MN 55416, USA.

Email: info@bioworld.com

Tel: 6123263284

Fax: 6122933841

Bioworld technology, co. Ltd.

Add: No 9, weidi road Qixia District Nanjing, 210046, P. R. China.

Email: info@biogot.com

Tel: 0086-025-68037686

Fax: 0086-025-68035151



PRODUCT DATA SHEET

Bioworld Technology, Inc.

Bioworld Technology, Inc.

Add: 1660 South Highway 100, Suite 500 St. Louis Park,
MN 55416, USA.

Email: info@bioworld.com

Tel: 6123263284

Fax: 6122933841

Bioworld technology, co. Ltd.

Add: No 9, weidi road Qixia District Nanjing, 210046,
P. R. China.

Email: info@biogot.com

Tel: 0086-025-68037686

Fax: 0086-025-68035151