

## MAD2L1BP polyclonal antibody

Catalog: BS5788

Host: Rabbit

Reactivity: Human, Mouse, Rat

### BackGround:

MAD2L1BP (MAD2L1 binding protein), also known as CMT2, is a 274 amino acid protein that localizes to the nucleoplasm during early mitosis and to the spindle from metaphase through anaphase. Functioning as a component of the spindle checkpoint (which delays the onset of anaphase until kinetochore attachment is complete), MAD2L1BP is thought to coordinate cell cycle events in late mitosis, possibly binding to MAD2, thereby silencing the spindle checkpoint and allowing mitosis to proceed. MAD2L1BP is expressed as multiple alternative spliced isoforms that, upon DNA damage, may be phosphorylated by ATM or ATR. The gene encoding MAD2L1BP maps to human chromosome 6, which contains 170 million base pairs and comprises nearly 6% of the human genome.

### Product:

Rabbit IgG, 1mg/ml in PBS with 0.02% sodium azide, 50% glycerol, pH7.2

### Molecular Weight:

~ 34 kDa

### Swiss-Prot:

Q15013

### Purification&Purity:

The antibody was affinity-purified from rabbit antiserum by affinity-chromatography using epitope-specific immunogen and the purity is > 95% (by SDS-PAGE).

### Applications:

WB: 1:500~1:1000

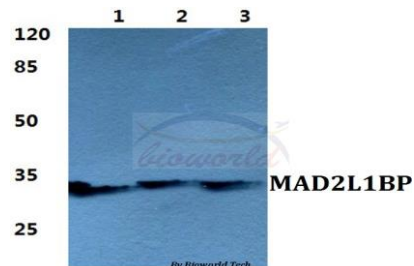
### Storage&Stability:

Store at 4 °C short term. Aliquot and store at -20 °C long term. Avoid freeze-thaw cycles.

### Specificity:

MAD2L1BP polyclonal antibody detects endogenous levels of MAD2L1-binding protein protein.

### DATA:



Western blot (WB) analysis of MAD2L1BP polyclonal antibody at 1:500 dilution

Lane1:HEK293T cell lysate

Lane2:Raw264.7 cell lysate

Lane3:H9C2 cell lysate

### Note:

For research use only, not for use in diagnostic procedure.

### Bioworld Technology, Inc.

Add: 1660 South Highway 100, Suite 500 St. Louis Park, MN 55416, USA.

Email: [info@bioworld.com](mailto:info@bioworld.com)

Tel: 6123263284

Fax: 6122933841

### Bioworld technology, co. Ltd.

Add: No 9, weidi road Qixia District Nanjing, 210046, P. R. China.

Email: [info@biogot.com](mailto:info@biogot.com)

Tel: 0086-025-68037686

Fax: 0086-025-68035151