

MX2 polyclonal antibody

Catalog: BS5805

Host: Rabbit

Reactivity: Human

BackGround:

Members of the Dynamin family include GTPase, microtubule-associated proteins that are involved in cellular trafficking, including microtubule bundling and endocytosis. Mx1, also known as MxA, an interferon (IFN)-induced protein, acquires a high degree of resistance to influenza A virus and the rhabdo-virus vesicular stomatitis virus (VSV), which suggests that Mx1 plays an active role against influenza virus and the rhabdovirus VSV. Mx1 is a cytoplasmic protein that is 63% identical to the Mx2 protein, which lacks antiviral activity. Mx2 is also known as MxB and is localized at the cytoplasmic face of nuclear pores. Mx2 expression is not interferon-dependent and this protein is thought to regulate the efficiency and/or kinetics of nuclear import, a function which may have been usurped by its antiviral relatives.

Product:

Rabbit IgG, 1mg/ml in PBS with 0.02% sodium azide, 50% glycerol, pH7.2

Molecular Weight:

~ 85 kDa

Swiss-Prot:

P20592

Purification&Purity:

The antibody was affinity-purified from rabbit antiserum by affinity-chromatography using epitope-specific immunogen and the purity is > 95% (by SDS-PAGE).

Applications:

WB: 1:1000~1:2000

IF: 1:50~1:200

IP: 1:50~1:200

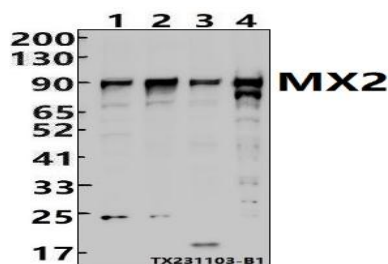
Storage&Stability:

Store at 4 °C short term. Aliquot and store at -20 °C long term. Avoid freeze-thaw cycles.

Specificity:

MX2 polyclonal antibody detects endogenous levels of

MX2 protein.

DATA:


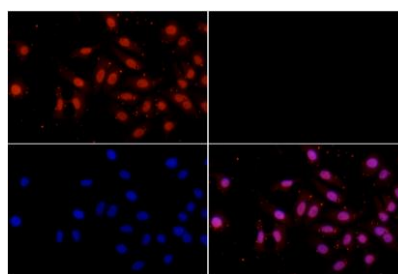
Western blot (WB) analysis of MX2 polyclonal antibody at 1:1000 dilution

Lane1:A431 cell lysate(30ug)

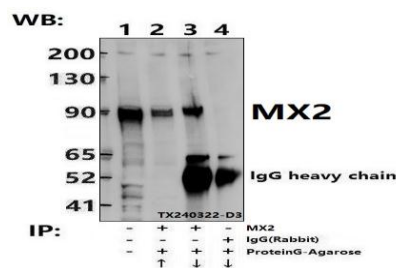
Lane2:Jurkat cell lysate(30ug)

Lane3:HepG2 cell lysate(30ug)

Lane4:THP-1 cell lysate(30ug)



Immunofluorescence analysis of HepG2 cells using MX2 pAb at dilution of 1:50.



Immunoprecipitation of HepG2 cell lysates using MX2 pAb (Sepharose Bead Conjugate)#BD0048 (lane 2 and lane3) and Nonspecific IgG Control (Sepharose Bead Conjugate)#BD0048 (lane 4) .Lane 1 is 30% input. The western blot was probed using MX2 pAb.

Note:
Bioworld Technology, Inc.

Add: 1660 South Highway 100, Suite 500 St. Louis Park, MN 55416, USA.

Email: info@bioworld.com

Tel: 6123263284

Fax: 6122933841

Bioworld technology, co. Ltd.

Add: No 9, weidi road Qixia District Nanjing, 210046, P. R. China.

Email: info@biogot.com

Tel: 0086-025-68037686

Fax: 0086-025-68035151



PRODUCT DATA SHEET

Bioworld Technology, Inc.

For research use only, not for use in diagnostic procedure.

Bioworld Technology, Inc.

Add: 1660 South Highway 100, Suite 500 St. Louis Park,
MN 55416, USA.

Email: info@bioworld.com

Tel: 6123263284

Fax: 6122933841

Bioworld technology, co. Ltd.

Add: No 9, weidi road Qixia District Nanjing, 210046,
P. R. China.

Email: info@biogot.com

Tel: 0086-025-68037686

Fax: 0086-025-68035151