

## OAT polyclonal antibody

Catalog: BS5833

Host: Rabbit

Reactivity: Human, Mouse, Rat

### BackGround:

OAT (ornithine aminotransferase (mitochondrial), ornithine-oxo-acid aminotransferase) is a 439 amino acid protein encoded by the human gene OAT. OAT belongs to the class III pyridoxal-phosphate-dependent aminotransferase family and is usually found as a homotetramer in the mitochondrion matrix. OAT catalyzes the major catalytic reaction for ornithine. Ornithinemia, presumably due to deficiency of ornithine ketoacid aminotransferase (OAT) has been found in patients with gyrate atrophy of the choroid and retina. The clinical history of gyrate atrophy is usually night blindness that begins in late childhood, accompanied by sharply demarcated circular areas of chorioretinal atrophy. During the second and third decades the areas of atrophy enlarge. The hepatic cleavage product, hepatic OAT, is formed by cleaving a 25 amino acid transit peptide from the N-terminus of the OAT precursor. The renal form is produced by cleaving a 35 amino acid transit peptide from the N-terminus.

### Product:

Rabbit IgG, 1mg/ml in PBS with 0.02% sodium azide, 50% glycerol, pH7.2

### Molecular Weight:

~ 49 kDa

### Swiss-Prot:

P04181

### Purification&Purity:

The antibody was affinity-purified from rabbit antiserum by affinity-chromatography using epitope-specific im-

munogen and the purity is > 95% (by SDS-PAGE).

### Applications:

WB: 1:500~1:1000

ICC: 1:50~1:200

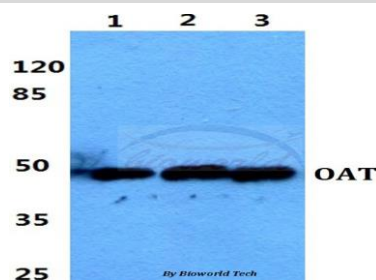
### Storage&Stability:

Store at 4 °C short term. Aliquot and store at -20 °C long term. Avoid freeze-thaw cycles.

### Specificity:

OAT polyclonal antibody detects endogenous levels of Ornithine aminotransferase (mitochondrial) protein.

### DATA:



Western blot (WB) analysis of OAT polyclonal antibody at 1:500 dilution

Lane1:A549 cell lysate

Lane2:Raw264.7 cell lysate

Lane3:H9C2 cell lysate

### Note:

For research use only, not for use in diagnostic procedure.

### Bioworld Technology, Inc.

Add: 1660 South Highway 100, Suite 500 St. Louis Park, MN 55416, USA.

Email: [info@bioworld.com](mailto:info@bioworld.com)

Tel: 6123263284

Fax: 6122933841

### Bioworld technology, co. Ltd.

Add: No 9, weidi road Qixia District Nanjing, 210046, P. R. China.

Email: [info@biogot.com](mailto:info@biogot.com)

Tel: 0086-025-68037686

Fax: 0086-025-68035151