

## OXR1 polyclonal antibody

Catalog: BS5837

Host: Rabbit

Reactivity: Human, Mouse, Rat

### Background:

Oxidative stress-responsive 1 protein (OXR1), a protein of 527 amino acids, belongs to the STE20 subfamily. OXR1 is one of two human homologs of Fray, a serine/threonine kinase expressed in *Drosophila*. OXR1 binds to and phosphorylates p21-activated protein kinase PAK1 and regulates downstream kinases in response to environmental stress. Endogenous OXR1 is activated only by osmotic stresses, notably sorbitol and to a lesser extent NaCl. OXR1 may also play a role in regulating the actin cytoskeleton. The chloride channel proteins SLC12A1, SLC12A2, and SLC12A6 isoform 2 interact with OXR1, but SLC12A4 and SLC12A7 do not. The WNK1 and WNK4 protein kinases activate OXR1 by phosphorylating its T-loop. The OXR1 protein is widely expressed in mammalian tissues.

### Product:

1 mg/ml in Phosphate buffered saline (PBS) with 0.05% sodium azide, approx. pH 7.2.

### Molecular Weight:

~ 58 kDa

### Swiss-Prot:

O95747

### Purification&Purity:

The antibody was affinity-purified from rabbit antiserum by affinity-chromatography using epitope-specific immunogen and the purity is > 95% (by SDS-PAGE).

### Applications:

WB: 1:500~1:1000

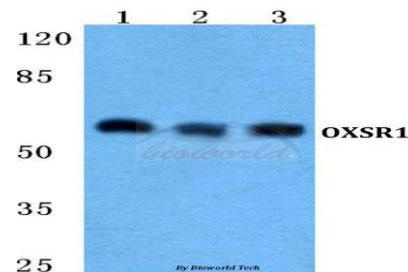
### Storage&Stability:

Store at 4 °C short term. Aliquot and store at -20 °C long term. Avoid freeze-thaw cycles.

### Specificity:

OXR1 polyclonal antibody detects endogenous levels of OXR1 protein.

### DATA:



Western blot (WB) analysis of OXR1 polyclonal antibody at 1:500 dilution

Lane1:Hela cell lysate

Lane2:sp2/0 cell lysate

Lane3:PC12 cell lysate

### Note:

For research use only, not for use in diagnostic procedure.

### Bioworld Technology, Inc.

Add: 1660 South Highway 100, Suite 500 St. Louis Park, MN 55416, USA.

Email: [info@bioworld.com](mailto:info@bioworld.com)

Tel: 6123263284

Fax: 6122933841

### Bioworld technology, co. Ltd.

Add: No 9, weidi road Qixia District Nanjing, 210046, P. R. China.

Email: [info@biogot.com](mailto:info@biogot.com)

Tel: 0086-025-68037686

Fax: 0086-025-68035151