

PSMD6 polyclonal antibody

Catalog: BS5838

Host: Rabbit

Reactivity: Human, Mouse, Rat

Background:

In eukaryotic cells, selective breakdown of cellular proteins is ensured by two distinct pathways, ubiquitination and degradation by the 26S proteasome. At specific stages of development, embryo- and tissue-specific components of the 26S proteasome are formed by developmentally regulated alternative splicing, including Rpn10a through Rpn10e (also designated pUb-R2 through pUb-R5). The pUb-R2 subunit, originally identified as S5a, is ubiquitously expressed and may perform proteolysis constitutively in a wide variety of cells. p44S10 is a highly conserved proteasome regulatory subunit that is expressed in heart, liver, skeletal muscle and pancreas. In addition to normal tissue expression, p44S10 is also expressed in several melanoma cell lines, such as MCF-7, 451Lu and WM164. Since forced expression of p44S10 in radial growth phase melanoma cells results in an increase in cellular proliferation, p44S10 may represent a potential link between regulation of proteasome activity and tumor cell proliferation in vivo.

Product:

Rabbit IgG, 1mg/ml in PBS with 0.02% sodium azide, 50% glycerol, pH7.2

Molecular Weight:

~ 45 kDa

Swiss-Prot:

Q15008

Purification&Purity:

The antibody was affinity-purified from rabbit antiserum by affinity-chromatography using epitope-specific immunogen and the purity is > 95% (by SDS-PAGE).

Applications:

WB: 1:500~1:1000

IHC: 1:50~1:200

Storage&Stability:

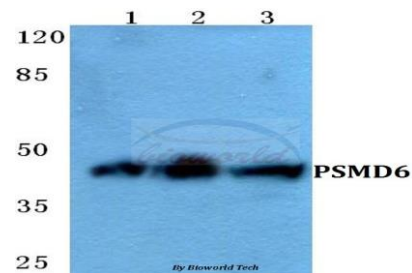
Store at 4 °C short term. Aliquot and store at -20 °C long

term. Avoid freeze-thaw cycles.

Specificity:

PSMD6 polyclonal antibody detects endogenous levels of PSMD6 protein.

DATA:

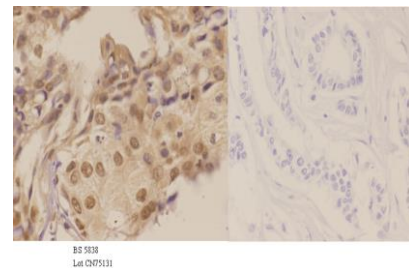


Western blot (WB) analysis of PSMD6 polyclonal antibody at 1:500 dilution

Lane1:Hela cell lysate

Lane2:sp2/0 cell lysate

Lane3:PC12 cell lysate



Immunohistochemistry (IHC) analyzes of PSMD6 pAb in paraffin-embedded human breast carcinoma tissue at 1:50, showing cytoplasmic and nucleus staining. Negative control (the right) Using PBS instead of primary antibody, secondary antibody is Goat Anti-Rabbit IgG-biotin followed by avidin-peroxidase.

Note:

For research use only, not for use in diagnostic procedure.

Bioworld Technology, Inc.

Add: 1660 South Highway 100, Suite 500 St. Louis Park, MN 55416, USA.

Email: info@bioworld.com

Tel: 6123263284

Fax: 6122933841

Bioworld technology, co. Ltd.

Add: No 9, weidi road Qixia District Nanjing, 210046, P. R. China.

Email: info@biogot.com

Tel: 0086-025-68037686

Fax: 0086-025-68035151



PRODUCT DATA SHEET

Bioworld Technology, Inc.

Bioworld Technology, Inc.

Add: 1660 South Highway 100, Suite 500 St. Louis Park,
MN 55416, USA.

Email: info@bioworld.com

Tel: 6123263284

Fax: 6122933841

Bioworld technology, co. Ltd.

Add: No 9, weidi road Qixia District Nanjing, 210046,
P. R. China.

Email: info@biogot.com

Tel: 0086-025-68037686

Fax: 0086-025-68035151