

## PRKX polyclonal antibody

Catalog: BS5865

Host: Rabbit

Reactivity: Human, Mouse, Rat

### Background:

The phosphorylation and dephosphorylation of proteins on serine and threonine residues is an essential means of regulating a broad range of cellular functions in eukaryotes, including cell division, homeostasis and apoptosis. A group of proteins that are intimately involved in this process are the serine/threonine (Ser/Thr) protein kinases. PRKY (protein kinase, Y-linked) and PRKX (protein kinase, X-linked) are members of the Ser/Thr protein kinase family, both of which belong to the subfamily of cAMP-dependent kinases. Encoded by a gene that is located near the pseudoautosomal region on chromosome Y, PRKY contains one protein kinase domain through which it catalyzes the ATP-dependent phosphorylation of target proteins. Functioning in a similar manner to PRXY, PRKX contains one protein kinase domain and is essential for macrophage differentiation and renal epithelial cell migration. Defects in the genes encoding PRKY and PRXX are associated with sex reversal disorder, namely XX in males and XY in females.

### Product:

Rabbit IgG, 1mg/ml in PBS with 0.02% sodium azide, 50% glycerol, pH7.2

### Molecular Weight:

~ 41 kDa

### Swiss-Prot:

P51817

### Purification&Purity:

The antibody was affinity-purified from rabbit antiserum by affinity-chromatography using epitope-specific immunogen and the purity is > 95% (by SDS-PAGE).

### Applications:

WB: 1:500~1:1000

IHC: 1:50~1:200

### Storage&Stability:

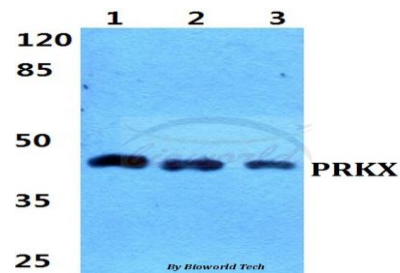
Store at 4 °C short term. Aliquot and store at -20 °C long

term. Avoid freeze-thaw cycles.

### Specificity:

PRKX polyclonal antibody detects endogenous levels of PRKX protein.

### DATA:

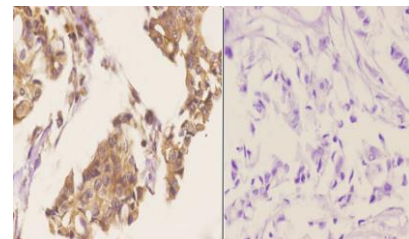


Western blot (WB) analysis of PRKX polyclonal antibody at 1:500 dilution

Lane1:HEK29T cell lysate

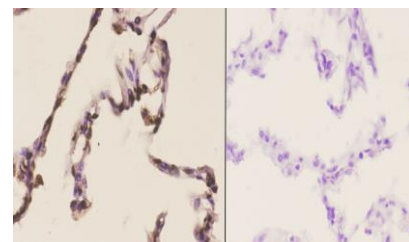
Lane2:sp2/0 cell lysate

Lane3:H9C2 cell lysate



BS5865  
Lot CN75131

Immunohistochemistry (IHC) analyzes of PRKX pAb in paraffin-embedded human breast carcinoma tissue at 1:50. showing cytoplasmic and nucleus staining. Negative control (the right) Using PBS instead of primary antibody, secondary antibody is Goat Anti-Rabbit IgG-biotin followed by avidin-peroxidase.



BS5865  
Lot CN75131

### Bioworld Technology, Inc.

Add: 1660 South Highway 100, Suite 500 St. Louis Park, MN 55416, USA.

Email: [info@bioworld.com](mailto:info@bioworld.com)

Tel: 6123263284

Fax: 6122933841

### Bioworld technology, co. Ltd.

Add: No 9, weidi road Qixia District Nanjing, 210046, P. R. China.

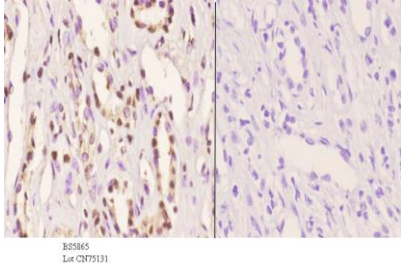
Email: [info@biogot.com](mailto:info@biogot.com)

Tel: 0086-025-68037686

Fax: 0086-025-68035151



Immunohistochemistry (IHC) analyzes of PRKX pAb in paraffin-embedded human lung carcinoma tissue at 1:50. showing cytoplasmic and nucleus staining. Negative control (the right) Using PBS instead of primary antibody, secondary antibody is Goat Anti-Rabbit IgG-biotin followed by avidin-peroxidase.



Immunohistochemistry (IHC) analyzes of PRKX pAb in paraffin-embedded human kidney carcinoma tissue at 1:50. showing cytoplasmic and nucleus staining. Negative control (the right) Using PBS instead of primary antibody, secondary antibody is Goat Anti-Rabbit

IgG-biotin followed by avidin-peroxidase.

**Note:**

For research use only, not for use in diagnostic procedure.

**Bioworld Technology, Inc.**

Add: 1660 South Highway 100, Suite 500 St. Louis Park, MN 55416, USA.

Email: [info@bioworld.com](mailto:info@bioworld.com)

Tel: 6123263284

Fax: 6122933841

**Bioworld technology, co. Ltd.**

Add: No 9, weidi road Qixia District Nanjing, 210046, P. R. China.

Email: [info@biogot.com](mailto:info@biogot.com)

Tel: 0086-025-68037686

Fax: 0086-025-68035151