

PTPRN2 polyclonal antibody

Catalog: BS5871

Host: Rabbit

Reactivity: Human, Mouse, Rat

Background:

Protein-Tyrosine Phosphatase Receptor-Type IA-2 β (PTP IA-2 β), alternately known as PTPRN2 or Phogrin, localizes in dense-core secretory vesicles of pancreas islet cells and influences insulin secretion. The PTP IA-2 β precursor is an autoantigen that contributes to insulin-dependent diabetes mellitus (IDDM). The autoantigenic epitopes of PTP IA-2 β appear within the cytoplasmic domain of this transmembrane protein. PTP IA-2 β is present at high levels in brain and pancreas with lower levels in trachea, prostate, stomach and spinal cord. The human PTPRN2 gene maps to chromosome 7q36. Northern blot analysis showed that PTPRN2 was expressed as 5.5- and 3.7-kb transcripts primarily in human brain and pancreas. Three alternative transcript splice variants of this gene encode distinct proteins.

Product:

1 mg/ml in Phosphate buffered saline (PBS) with 0.05% sodium azide, approx. pH 7.2.

Molecular Weight:

~ 60, 64, 135 kDa

Swiss-Prot:

Q92932

Purification&Purity:

The antibody was affinity-purified from rabbit antiserum by affinity-chromatography using epitope-specific immunogen and the purity is > 95% (by SDS-PAGE).

Applications:

WB: 1:500~1:1000

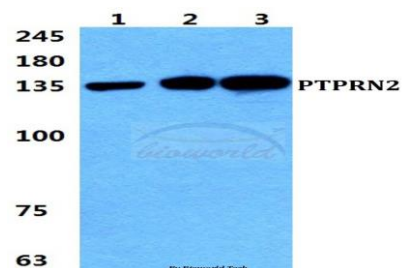
Storage&Stability:

Store at 4 °C short term. Aliquot and store at -20 °C long term. Avoid freeze-thaw cycles.

Specificity:

PTPRN2 polyclonal antibody detects endogenous levels of PTPRN2 protein.

DATA:



Western blot (WB) analysis of PTPRN2 polyclonal antibody at 1:500 dilution

Lane1:HeLa cell lysate

Lane2:sp2/0 cell lysate

Lane3:H9C2 cell lysate

Note:

For research use only, not for use in diagnostic procedure.

Bioworld Technology, Inc.

Add: 1660 South Highway 100, Suite 500 St. Louis Park, MN 55416, USA.

Email: info@bioworld.com

Tel: 6123263284

Fax: 6122933841

Bioworld technology, co. Ltd.

Add: No 9, weidi road Qixia District Nanjing, 210046, P. R. China.

Email: info@biogot.com

Tel: 0086-025-68037686

Fax: 0086-025-68035151