

## CHML polyclonal antibody

Catalog: BS5889

Host: Rabbit

Reactivity: Human, Mouse, Rat

### Background:

Two isoforms of the REP gene have been isolated, REP-1 and REP-2. The REP-1 gene, located on chromosome Xq21, is prone to a wide variety of mutations, including nonsense, frameshift and splice-site mutations and deletions. In patients with choroideaemia (CHM), mutations in the REP-1 gene result in progressive dystrophy of the choroid, retinal pigment epithelium and retina. CHM is an X-linked hereditary eye disease that leads to blindness later in life. REP-2 is able to bind to several Rab proteins with the same affinity as REP-1 and may act a substitute for REP-1 to prevent widespread tissue abnormalities in patients with CHM.

### Product:

1 mg/ml in Phosphate buffered saline (PBS) with 0.05% sodium azide, approx. pH 7.2.

### Molecular Weight:

~ 74 kDa

### Swiss-Prot:

P26374

### Purification&Purity:

The antibody was affinity-purified from rabbit antiserum by affinity-chromatography using epitope-specific immunogen and the purity is > 95% (by SDS-PAGE).

### Applications:

WB: 1:500~1:1000

IHC: 1:50~1:200

### Storage&Stability:

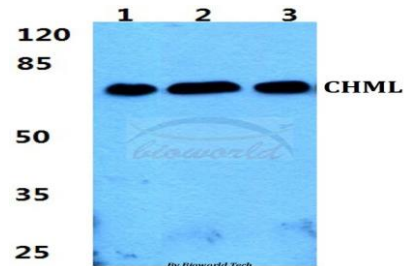
Store at 4 °C short term. Aliquot and store at -20 °C long term. Avoid freeze-thaw cycles.

### Specificity:

CHML polyclonal antibody detects endogenous levels of

CHML protein.

### DATA:

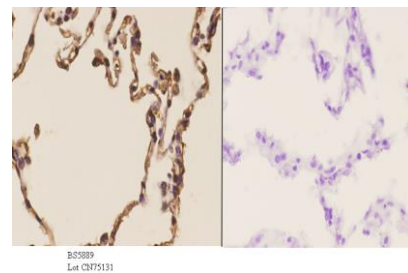


Western blot (WB) analysis of CHML polyclonal antibody at 1:500 dilution

Lane1:Hela cell lysate

Lane2:NIH-3T3 cell lysate

Lane3:H9C2 cell lysate



Immunohistochemistry (IHC) analyzes of CHML pAb in paraffin-embedded human lung carcinoma tissue at 1:50. showing cytoplasmic and nucleus staining. Negative control (the right) Using PBS instead of primary antibody, secondary antibody is Goat Anti-Rabbit IgG-biotin followed by avidin-peroxidase.

### Note:

For research use only, not for use in diagnostic procedure.

### Bioworld Technology, Inc.

Add: 1660 South Highway 100, Suite 500 St. Louis Park, MN 55416, USA.

Email: [info@bioworld.com](mailto:info@bioworld.com)

Tel: 6123263284

Fax: 6122933841

### Bioworld technology, co. Ltd.

Add: No 9, weidi road Qixia District Nanjing, 210046, P. R. China.

Email: [info@biogot.com](mailto:info@biogot.com)

Tel: 0086-025-68037686

Fax: 0086-025-68035151