

RGS1 polyclonal antibody

Catalog: BS5894

Host: Rabbit

Reactivity: Human, Mouse, Rat

Background:

Heterotrimeric G proteins function to relay information from cell surface receptors to intracellular effectors. In mammals, G protein α , β and γ polypeptides are encoded by at least 16, 4 and 7 genes, respectively. Most interest in G proteins has been focused on their α subunits, since these proteins bind and hydrolyze GTP and most obviously regulate the activity of the best studied effectors. Several G α GTPase activating proteins (GAPs) have been identified and are designated RGS1, RGS2, RGS4, RGS7, RGS9, RGS10 and GAIP (G α -interacting protein). Each of these proteins has been shown to deactivate specific G α isoforms by increasing the rate at which they convert GTP to GDP. RGS2 has been shown to be an inhibitor of G α q function. RGS9 expression is restricted to photoreceptor cells and RGS9 has been shown to regulate G α t.

Product:

1 mg/ml in Phosphate buffered saline (PBS) with 0.05% sodium azide, approx. pH 7.2.

Molecular Weight:

~ 22 kDa

Swiss-Prot:

Q08116

Purification&Purity:

The antibody was affinity-purified from rabbit antiserum by affinity-chromatography using epitope-specific immunogen and the purity is > 95% (by SDS-PAGE).

Applications:

WB: 1:500~1:1000

IHC: 1:50~1:200

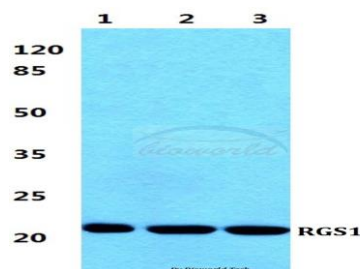
Storage&Stability:

Store at 4 °C short term. Aliquot and store at -20 °C long term. Avoid freeze-thaw cycles.

Specificity:

RGS1 polyclonal antibody detects endogenous levels of RGS1 protein.

DATA:

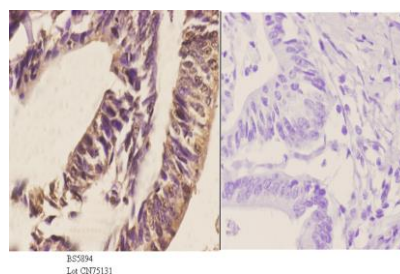


Western blot (WB) analysis of RGS1 polyclonal antibody at 1:500 dilution

Lane1:Hela cell lysate

Lane2:Raw264.7 cell lysate

Lane3:H9C2 cell lysate



Immunohistochemistry (IHC) analyzes of RGS1 pAb in paraffin-embedded human colon carcinoma tissue at 1:50. showing cytoplasmic and nucleus staining. Negative control (the right) Using PBS instead of primary antibody, secondary antibody is Goat Anti-Rabbit IgG-biotin followed by avidin-peroxidase.

Note:

For research use only, not for use in diagnostic procedure.

Bioworld Technology, Inc.

Add: 1660 South Highway 100, Suite 500 St. Louis Park, MN 55416, USA.

Email: info@bioworld.com

Tel: 6123263284

Fax: 6122933841

Bioworld technology, co. Ltd.

Add: No 9, weidi road Qixia District Nanjing, 210046, P. R. China.

Email: info@biogot.com

Tel: 0086-025-68037686

Fax: 0086-025-68035151