

RPS3 polyclonal antibody

Catalog: BS5909

Host: Rabbit

Reactivity: Human, Mouse, Rat

BackGround:

Mitochondrial ribosomes consist of a small 28S subunit and a large 39S subunit. Ribosomal proteins have the ability to pass through the nuclear envelope in the native state, making them the largest of the structures accommodated by the nuclear pore complexes. The nuclear export of ribosomal subunits is a unidirectional, saturable and energy-dependent process. Ribosomal Protein S3 a member of the 40S subunit and plays a role in translation and ribosome maturation. Specifically, Ribosomal Protein S3 mediates the formation of the mRNA binding site 3' of the codon in the decoding site. In addition, Ribosomal Protein S3 is involved in DNA damage recognition as shown by its affinity for abasic sites and 7,8-dihydro-8-oxoguanine residues and its interaction with human base excision repair (BER) proteins OGG1 and Ref-1.

Product:

1 mg/ml in Phosphate buffered saline (PBS) with 0.05% sodium azide, approx. pH 7.2.

Molecular Weight:

~ 33 kDa

Swiss-Prot:

P23396

Purification&Purity:

The antibody was affinity-purified from rabbit antiserum by affinity-chromatography using epitope-specific immunogen and the purity is > 95% (by SDS-PAGE).

Applications:

WB: 1:500~1:1000

IHC: 1:50~1:200

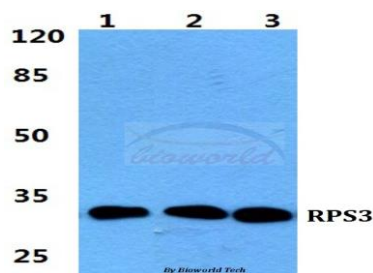
Storage&Stability:

Store at 4 °C short term. Aliquot and store at -20 °C long term. Avoid freeze-thaw cycles.

Specificity:

RPS3 polyclonal antibody detects endogenous levels of RPS3 protein.

DATA:



Western blot (WB) analysis of RPS3 polyclonal antibody at 1:500 dilution

Lane1:Hela cell lysate

Lane2:sp2/0 cell lysate

Lane3:H9C2 cell lysate

Note:

For research use only, not for use in diagnostic procedure.

Bioworld Technology, Inc.

Add: 1660 South Highway 100, Suite 500 St. Louis Park, MN 55416, USA.

Email: info@bioworld.com

Tel: 6123263284

Fax: 6122933841

Bioworld technology, co. Ltd.

Add: No 9, weidi road Qixia District Nanjing, 210046, P. R. China.

Email: info@biogot.com

Tel: 0086-025-68037686

Fax: 0086-025-68035151