

TROVE2 polyclonal antibody

Catalog: BS5914

Host: Rabbit

Reactivity: Human, Mouse, Rat

BackGround:

Ro autoantigens are of clinical significance because antibodies directed against them are found in most patients with primary Sjogren syndrome, subacute cutaneous lupus erythematosus (SLE), neonatal lupus erythematosus, ANA-negative lupus erythematosus, and systemic lupus erythematosus-like disease secondary to homozygous C2 or C4 complement deficiency. Ro/SSA is a ribonucleoprotein that binds to autoantibodies in 35 to 50% of patients with SLE and in up to 97% of patients with Sjogren syndrome. The Ro/SSA particle consists of a single immunoreactive protein noncovalently bound with one of four small RNA molecules. Most anti-Ro/SSA-positive sera antibodies detect not only the main protein, but also a smaller Ro/SSA protein.

Product:

Rabbit IgG, 1mg/ml in PBS with 0.02% sodium azide, 50% glycerol, pH7.2

Molecular Weight:

~ 60 kDa

Swiss-Prot:

P10155

Purification&Purity:

The antibody was affinity-purified from rabbit antiserum by affinity-chromatography using epitope-specific immunogen and the purity is > 95% (by SDS-PAGE).

Applications:

WB: 1:500~1:1000

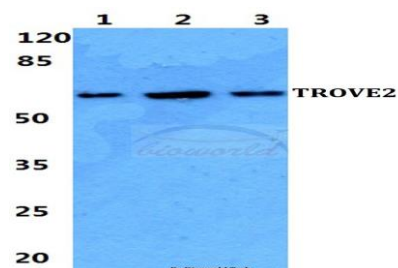
Storage&Stability:

Store at 4 °C short term. Aliquot and store at -20 °C long term. Avoid freeze-thaw cycles.

Specificity:

TROVE2 polyclonal antibody detects endogenous levels of TROVE2 protein.

DATA:



Western blot (WB) analysis of TROVE2 polyclonal antibody at 1:500 dilution

Lane1:Hela cell lysate

Lane2:Mouse brain tissue lysate

Lane3:Rat brain tissue lysate

Note:

For research use only, not for use in diagnostic procedure.

Bioworld Technology, Inc.

Add: 1660 South Highway 100, Suite 500 St. Louis Park, MN 55416, USA.

Email: info@bioworld.com

Tel: 6123263284

Fax: 6122933841

Bioworld technology, co. Ltd.

Add: No 9, weidi road Qixia District Nanjing, 210046, P. R. China.

Email: info@biogot.com

Tel: 0086-025-68037686

Fax: 0086-025-68035151