

## SF3B1 polyclonal antibody

Catalog: BS5919

Host: Rabbit

Reactivity: Human, Mouse, Rat

### Background:

SF3b is a U2 snRNP-associated protein complex essential for spliceosome assembly. SF3b contains the spliceosomal proteins SAP 49, SAP 130, SAP 145, and SAP 155. SAP 130, SAP 145, and SAP 155 are present in a protein complex in HeLa nuclear extracts and associate with one another. While SAP 155 and SAP 130 interact with each other (directly or indirectly) within this complex, SAP 49 and SAP 145 are known to interact directly with each other. Unexpectedly, the SAP 49-SAP 145 protein-protein interaction requires the amino-terminus of SAP 49, which contains two RNA-recognition motifs. The observation that SAP 49 and SAP 145 interact directly with both U2 snRNP and the pre-mRNA suggests that this protein complex plays a role in tethering U2 snRNP to the branch site.

### Product:

Rabbit IgG, 1mg/ml in PBS with 0.02% sodium azide, 50% glycerol, pH7.2

### Molecular Weight:

~ 155 kDa

### Swiss-Prot:

O75533

### Purification&Purity:

The antibody was affinity-purified from rabbit antiserum by affinity-chromatography using epitope-specific immunogen and the purity is > 95% (by SDS-PAGE).

### Applications:

WB: 1:500~1:1000

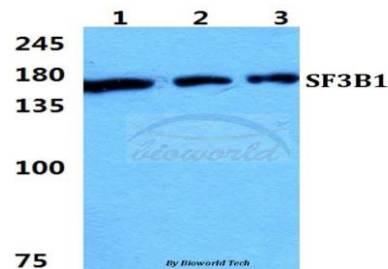
### Storage&Stability:

Store at 4 °C short term. Aliquot and store at -20 °C long term. Avoid freeze-thaw cycles.

### Specificity:

SF3B1 polyclonal antibody detects endogenous levels of SF3B1 protein.

### DATA:



Western blot (WB) analysis of SF3B1 polyclonal antibody at 1:500 dilution

Lane1:Hela cell lysate

Lane2:sp2/0 cell lysate

Lane3:H9C2 cell lysate

### Note:

For research use only, not for use in diagnostic procedure.

### Bioworld Technology, Inc.

Add: 1660 South Highway 100, Suite 500 St. Louis Park, MN 55416, USA.

Email: [info@bioworld.com](mailto:info@bioworld.com)

Tel: 6123263284

Fax: 6122933841

### Bioworld technology, co. Ltd.

Add: No 9, weidi road Qixia District Nanjing, 210046, P. R. China.

Email: [info@biogot.com](mailto:info@biogot.com)

Tel: 0086-025-68037686

Fax: 0086-025-68035151