

Septin 6 polyclonal antibody

Catalog: BS5925

Host: Rabbit

Reactivity: Human, Mouse, Rat

Background:

Septin 6, also known as SEPT6, is a 434 amino acid protein that belongs to the septin family. The highly conserved septin family of GTP-binding cytoskeletal proteins is implicated in membrane transport, apoptosis, cell polarity, cell cycle regulation, cytokinesis and other cellular functions. Septins polymerize into heterooligomeric protein complexes that form filaments, and can associate with cellular membranes, actin filaments and microtubules. Filaments are assembled from asymmetrical heterotrimers, composed of Septin 2, Septin 6 and Septin 7 that associate head-to-head to form a hexameric unit, however interaction with Septin 12 alters filament structure. Septin 6 shares 40% identity with CDC10 and contains an ATP/GTP-binding site motif. The Septin 6 protein demonstrates nearly ubiquitous expression, with highest level in thymus. The Septin 6 protein is phosphorylated upon DNA damage, probably by Atm or ATR.

Product:

Rabbit IgG, 1mg/ml in PBS with 0.02% sodium azide, 50% glycerol, pH7.2

Molecular Weight:

~ 50 kDa

Swiss-Prot:

Q14141

Purification&Purity:

The antibody was affinity-purified from rabbit antiserum by affinity-chromatography using epitope-specific immunogen and the purity is > 95% (by SDS-PAGE).

Applications:

WB: 1:500~1:1000

IHC: 1:50~1:200

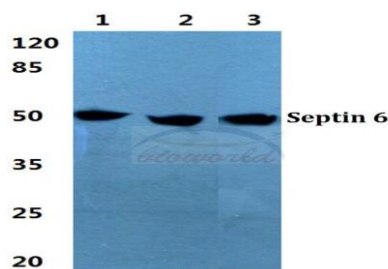
Storage&Stability:

Store at 4 °C short term. Aliquot and store at -20 °C long term. Avoid freeze-thaw cycles.

Specificity:

Septin 6 polyclonal antibody detects endogenous levels of Septin 6 protein.

DATA:

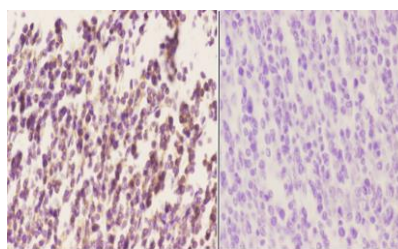


Western blot (WB) analysis of Septin 6 polyclonal antibody at 1:500 dilution

Lane1:Hela cell lysate

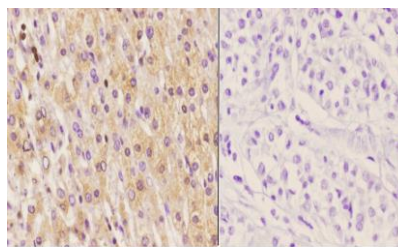
Lane2:sp2/0 cell lysate

Lane3:PC12 cell lysate



BS5925
Lot CN79131

Immunohistochemistry (IHC) analyzes of Septin 6 pAb in paraffin-embedded human tonsil carcinoma tissue at 1:50, showing cytoplasmic and nucleus staining. Negative control (the right) Using PBS instead of primary antibody, secondary antibody is Goat Anti-Rabbit IgG-biotin followed by avidin-peroxidase.



BS5925
Lot CN79131

Immunohistochemistry (IHC) analyzes of Septin 6 pAb in paraffin-embedded human liver carcinoma tissue at 1:50, showing cytoplasmic and nucleus staining.

Bioworld Technology, Inc.

Add: 1660 South Highway 100, Suite 500 St. Louis Park, MN 55416, USA.

Email: info@bioworld.com

Tel: 6123263284

Fax: 6122933841

Bioworld technology, co. Ltd.

Add: No 9, weidi road Qixia District Nanjing, 210046, P. R. China.

Email: info@biogot.com

Tel: 0086-025-68037686

Fax: 0086-025-68035151



PRODUCT DATA SHEET

Bioworld Technology, Inc.

mic and nucleus staining. Negative control (the right) Using PBS instead of primary antibody, secondary antibody is Goat Anti-Rabbit IgG-biotin followed by avidin-peroxidase.

Note:

For research use only, not for use in diagnostic procedure.

Bioworld Technology, Inc.

Add: 1660 South Highway 100, Suite 500 St. Louis Park,
MN 55416, USA.

Email: info@bioworld.com

Tel: 6123263284

Fax: 6122933841

Bioworld technology, co. Ltd.

Add: No 9, weidi road Qixia District Nanjing, 210046,
P. R. China.

Email: info@biogot.com

Tel: 0086-025-68037686

Fax: 0086-025-68035151