

SFT2D2 polyclonal antibody

Catalog: BS5928

Host: Rabbit

Reactivity: Human, Mouse, Rat

BackGround:

SFT2D2 (SFT2 domain-containing protein 2) is a 160 amino acid multi-pass membrane protein that belongs to the SFT2 family. SFT2D2 may be involved in fusion of retrograde transport vesicles derived from an endocytic compartment with the Golgi complex. The SFT2D2 gene is conserved in dog, cow, mouse, rat, chicken, A.thaliana and rice, and maps to human chromosome 1q24.2. Chromosome 1 is the largest human chromosome spanning about 260 million base pairs and making up 8% of the human genome. The MUTYH gene is located on chromosome 1 and is partially responsible for familial adenomatous polyposis. Stickler syndrome, Parkinsons, Gaucher disease and Usher syndrome are also associated with chromosome 1. A breakpoint has been identified in 1q which disrupts the DISC1 gene and is linked to schizophrenia. Aberrations in chromosome 1 are found in a variety of cancers including head and neck cancer, malignant melanoma and multiple myeloma.

Product:

Rabbit IgG, 1mg/ml in PBS with 0.02% sodium azide, 50% glycerol, pH7.2

Molecular Weight:

~ 18 kDa

Swiss-Prot:

O95562

Purification&Purity:

The antibody was affinity-purified from rabbit antiserum by affinity-chromatography using epitope-specific im-

munogen and the purity is > 95% (by SDS-PAGE).

Applications:

WB: 1:500~1:1000

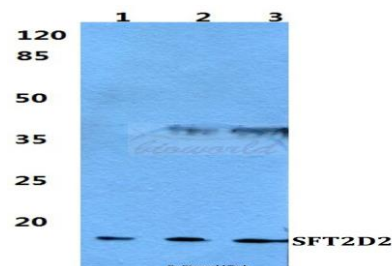
Storage&Stability:

Store at 4 °C short term. Aliquot and store at -20 °C long term. Avoid freeze-thaw cycles.

Specificity:

SFT2D2 polyclonal antibody detects endogenous levels of SFT2D2 protein.

DATA:



Western blot (WB) analysis of SFT2D2 polyclonal antibody at 1:500 dilution

Lane1:MCF-7 cell lysate

Lane2:Raw264.7 cell lysate

Lane3:PC12 cell lysate

Note:

For research use only, not for use in diagnostic procedure.

Bioworld Technology, Inc.

Add: 1660 South Highway 100, Suite 500 St. Louis Park, MN 55416, USA.

Email: info@bioworld.com

Tel: 6123263284

Fax: 6122933841

Bioworld technology, co. Ltd.

Add: No 9, weidi road Qixia District Nanjing, 210046, P. R. China.

Email: info@biogot.com

Tel: 0086-025-68037686

Fax: 0086-025-68035151