

SLC43A1 polyclonal antibody

Catalog: BS5933

Host: Rabbit

Reactivity: Human, Mouse, Rat

BackGround:

SLC43A1 belongs to the system L family of plasma membrane carrier proteins that transports large neutral amino acids. SLC43A1 belongs to the system L family of plasma membrane carrier proteins that transports large neutral amino acids.

Product:

Rabbit IgG, 1mg/ml in PBS with 0.02% sodium azide, 50% glycerol, pH7.2

Molecular Weight:

~ 61 kDa

Swiss-Prot:

O75387

Purification&Purity:

The antibody was affinity-purified from rabbit antiserum by affinity-chromatography using epitope-specific immunogen and the purity is > 95% (by SDS-PAGE).

Applications:

WB: 1:500~1:1000

ICC: 1:50~1:200

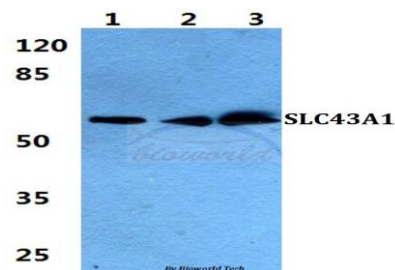
Storage&Stability:

Store at 4 °C short term. Aliquot and store at -20 °C long

term. Avoid freeze-thaw cycles.

Specificity:

SLC43A1 polyclonal antibody detects endogenous levels of SLC43A1 protein.

DATA:

Western blot (WB) analysis of SLC43A1 polyclonal antibody at 1:500 dilution

Lane1:HEK293T cell lysate

Lane2:sp2/0 cell lysate

Lane3:H9C2 cell lysate

Note:

For research use only, not for use in diagnostic procedure.

Bioworld Technology, Inc.

Add: 1660 South Highway 100, Suite 500 St. Louis Park, MN 55416, USA.

Email: info@bioworld.com

Tel: 6123263284

Fax: 6122933841

Bioworld technology, co. Ltd.

Add: No 9, weidi road Qixia District Nanjing, 210046, P. R. China.

Email: info@biogot.com

Tel: 0086-025-68037686

Fax: 0086-025-68035151