

ZNF187 polyclonal antibody

Catalog: BS5945

Host: Rabbit

Reactivity: Human, Mouse, Rat

BackGround:

The best studied of the immediate early genes is the c-Fos proto-oncogene. Many of the signals inducing Fos expression act through a sequence located in the 5' flanking region of c-Fos, designated the serum response element (SRE). The SRE is required for response to activators of protein kinase C and Fos growth-induced signals independent of protein kinase C. Accumulating evidence argues that the SRE is a multifunctional element that may involve the action of multiple SRE-binding proteins. These include the serum response factor (SRF) and the two less well characterized proteins, TCF p62 and BBF p62. An SRE binding nuclear protein, designated SRE-ZBP, is a member of the C2H2 zinc finger family of proteins. Like c-Fos, SRE-ZBP is serum-inducible in HeLa cells, although with slower kinetics.

Product:

Rabbit IgG, 1mg/ml in PBS with 0.02% sodium azide, 50% glycerol, pH7.2

Molecular Weight:

~ 55 kDa

Swiss-Prot:

Q16670

Purification&Purity:

The antibody was affinity-purified from rabbit antiserum by affinity-chromatography using epitope-specific immunogen and the purity is > 95% (by SDS-PAGE).

Applications:

WB: 1:500~1:1000

ICC: 1:50~1:200

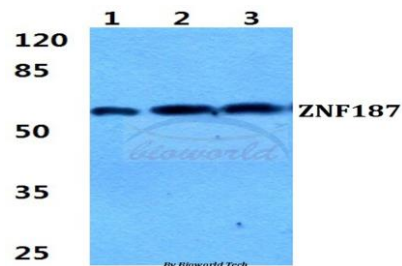
Storage&Stability:

Store at 4 °C short term. Aliquot and store at -20 °C long term. Avoid freeze-thaw cycles.

Specificity:

ZNF187 polyclonal antibody detects endogenous levels of ZNF187 protein.

DATA:



Western blot (WB) analysis of ZNF187 polyclonal antibody at 1:500 dilution

Lane1:HEK293T cell lysate

Lane2:Hela cell lysate

Lane3:sp2/0 cell lysate

Note:

For research use only, not for use in diagnostic procedure.

Bioworld Technology, Inc.

Add: 1660 South Highway 100, Suite 500 St. Louis Park, MN 55416, USA.

Email: info@bioworld.com

Tel: 6123263284

Fax: 6122933841

Bioworld technology, co. Ltd.

Add: No 9, weidi road Qixia District Nanjing, 210046, P. R. China.

Email: info@biogot.com

Tel: 0086-025-68037686

Fax: 0086-025-68035151