

TOM20 polyclonal antibody

Catalog: BS5966

Host: Rabbit

Reactivity: Human, Mouse, Rat

BackGround:

Central component of the receptor complex responsible for the recognition and translocation of cytosolically synthesized mitochondrial preproteins. Together with TOM22 functions as the transit peptide receptor at the surface of the mitochondrion outer membrane and facilitates the movement of preproteins into the TOM40 translocation pore.

Product:

Rabbit IgG, 1mg/ml in PBS with 0.02% sodium azide, 50% glycerol, pH7.2

Molecular Weight:

~ 90 kDa

Swiss-Prot:

Q15388

Purification&Purity:

The antibody was affinity-purified from rabbit antiserum by affinity-chromatography using epitope-specific immunogen and the purity is > 95% (by SDS-PAGE).

Applications:

WB 1:500 - 1:1000

IF/ICC: 1:50-1:200

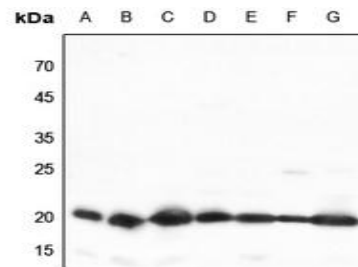
Storage&Stability:

Store at 4 °C short term. Aliquot and store at -20 °C long term. Avoid freeze-thaw cycles.

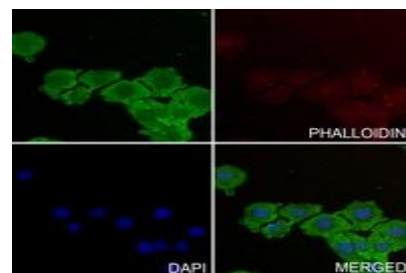
Specificity:

TOM20 polyclonal antibody detects endogenous levels of TOM20 protein.

DATA:



Western blot analysis of TOM20 expression in HEK293T (A), HeLa (B), H460 (C), mouse lung (D), mouse spleen (E), mouse kidney (F), rat spleen (G) whole cell lysates.



Immunofluorescent analysis of TOM20 staining in HeLa cells.

Note:

For research use only, not for use in diagnostic procedure.

Bioworld Technology, Inc.

Add: 1660 South Highway 100, Suite 500 St. Louis Park, MN 55416, USA.

Email: info@bioworld.com

Tel: 6123263284

Fax: 6122933841

Bioworld technology, co. Ltd.

Add: No 9, weidi road Qixia District Nanjing, 210046, P. R. China.

Email: info@biogot.com

Tel: 0086-025-68037686

Fax: 0086-025-68035151