

## USP19 polyclonal antibody

Catalog: BS5975

Host: Rabbit

Reactivity: Human, Mouse, Rat

### BackGround:

The ubiquitin (Ub) pathway involves three sequential enzymatic steps that facilitate the conjugation of Ub and Ub-like molecules to specific protein substrates. Through the use of a wide range of enzymes that can add or remove ubiquitin, the Ub pathway controls many intracellular processes such as signal transduction, transcriptional activation and cell cycle progression. Ubiquitin-specific-processing protease 19 (USP19), also known as ubiquitin carboxyl-terminal hydrolase 19, ubiquitin thioesterase 19 and deubiquitinating enzyme 19, is a 1318 amino acid member of the peptidase C19 family of proteins. USP19 is thought to be involved in the ubiquitin-dependent proteolytic pathway in conjunction with the 26S proteasome. Four known isoforms of USP19 exist as a result of alternative splicing events.

### Product:

Rabbit IgG, 1mg/ml in PBS with 0.02% sodium azide, 50% glycerol, pH7.2

### Molecular Weight:

~ 146 kDa

### Swiss-Prot:

O94966

### Purification&Purity:

The antibody was affinity-purified from rabbit antiserum by affinity-chromatography using epitope-specific immunogen and the purity is > 95% (by SDS-PAGE).

### Applications:

WB: 1:500~1:1000

IHC: 1:50~1:200

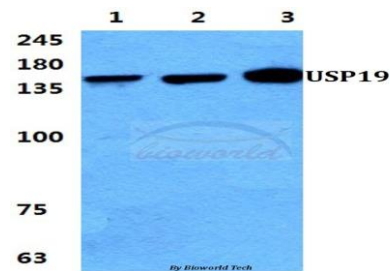
### Storage&Stability:

Store at 4 °C short term. Aliquot and store at -20 °C long term. Avoid freeze-thaw cycles.

### Specificity:

USP19 polyclonal antibody detects endogenous levels of USP19 protein.

### DATA:

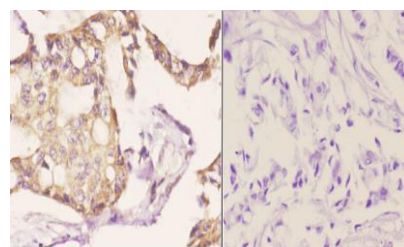


Western blot (WB) analysis of USP19 polyclonal antibody at 1:500 dilution

Lane1:MCF-7 cell lysate

Lane2:HEK293T cell lysate

Lane3:H9C2 cell lysate



Immunohistochemistry (IHC) analyzes of USP19 pAb in paraffin-embedded human breast carcinoma tissue at 1:50. showing endoplasmic reticulum membrane staining. Negative control (the right) Using PBS instead of primary antibody, secondary antibody is Goat Anti-Rabbit IgG-biotin followed by avidin-peroxidase.

### Note:

For research use only, not for use in diagnostic procedure.

### Bioworld Technology, Inc.

Add: 1660 South Highway 100, Suite 500 St. Louis Park, MN 55416, USA.

Email: [info@bioworld.com](mailto:info@bioworld.com)

Tel: 6123263284

Fax: 6122933841

### Bioworld technology, co. Ltd.

Add: No 9, weidi road Qixia District Nanjing, 210046, P. R. China.

Email: [info@biogot.com](mailto:info@biogot.com)

Tel: 0086-025-68037686

Fax: 0086-025-68035151