

## ZNF682 polyclonal antibody

Catalog: BS5981

Host: Rabbit

Reactivity: Human, Mouse, Rat

### BackGround:

Zinc-finger proteins contain DNA-binding domains and have a wide variety of functions, most of which encompass some form of transcriptional activation or repression. The majority of zinc-finger proteins contain a Krueppel-type DNA binding domain and a KRAB domain, which is thought to interact with KAP1, thereby recruiting histone modifying proteins. Zinc finger protein 682 (ZNF682) is a 498 amino acid member of the Krueppel C2H2-type zinc-finger protein family. Localized to the nucleus, ZNF682 contains eleven C2H2-type zinc fingers and one KRAB domain through which it is thought to be involved in DNA-binding and transcriptional regulation. Two isoforms of ZNF682 exist as a result of alternative splicing events.

### Product:

Rabbit IgG, 1mg/ml in PBS with 0.02% sodium azide, 50% glycerol, pH7.2

### Molecular Weight:

~ 58 kDa

### Swiss-Prot:

O95780

### Purification&Purity:

The antibody was affinity-purified from rabbit antiserum by affinity-chromatography using epitope-specific immunogen and the purity is > 95% (by SDS-PAGE).

### Applications:

WB: 1:500~1:1000

ICC: 1:50~1:200

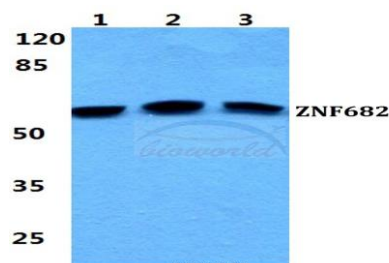
### Storage&Stability:

Store at 4 °C short term. Aliquot and store at -20 °C long term. Avoid freeze-thaw cycles.

### Specificity:

ZNF682 polyclonal antibody detects endogenous levels of ZNF682 protein.

### DATA:



Western blot (WB) analysis of ZNF682 polyclonal antibody at 1:500 dilution

Lane1:HEK293T cell lysate

Lane2:NIH-3T3 cell lysate

Lane3:H9C2 cell lysate

### Note:

For research use only, not for use in diagnostic procedure.

### Bioworld Technology, Inc.

Add: 1660 South Highway 100, Suite 500 St. Louis Park, MN 55416, USA.

Email: [info@bioworld.com](mailto:info@bioworld.com)

Tel: 6123263284

Fax: 6122933841

### Bioworld technology, co. Ltd.

Add: No 9, weidi road Qixia District Nanjing, 210046, P. R. China.

Email: [info@biogot.com](mailto:info@biogot.com)

Tel: 0086-025-68037686

Fax: 0086-025-68035151