

DUSP14 polyclonal antibody

Catalog: BS60040

Host: Rabbit

Reactivity: Human, Mouse, Rat

BackGround:

The deduced 198 amino acid MAP kinase phosphatase 6 (MKP-6), also designated MAP6 and dual-specificity phosphatase 14 (DUSP14), is homologous to other MKP family proteins in that it has a conserved, centrally located, catalytic core, but differs from traditional MKP proteins because it contains unique N- and C-terminal regions. Binding and deletion analyses have established that the interaction between the cytoplasmic tail of CD28 (a T cell antigen) and MKP-6 occurs at Tyr 200 of CD28 and is specific for both MKP-6 and CD28; however, Tyr 200 can be mutated to Phe 200 without a loss of binding ability. Functional analysis indicates that MKP-6 dephosphorylates ERK, JNK and p38 while acting as a negative regulator of CD28 signaling. MKP-6 is expressed ubiquitously, although expression is stronger in certain cell types and tissues than in others.

Product:

Rabbit IgG, 1mg/ml in PBS with 0.02% sodium azide, 50% glycerol, pH7.2

Molecular Weight:

~ 22 kDa

Swiss-Prot:

O95147

Purification&Purity:

The antibody was affinity-purified from rabbit antiserum by affinity-chromatography using epitope-specific immunogen and the purity is > 95% (by SDS-PAGE).

Applications:

WB: 1:500~1:1000

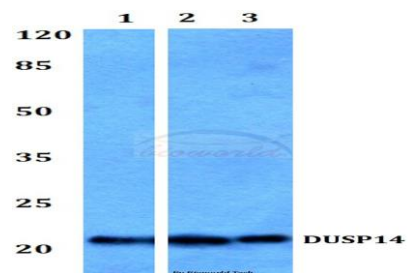
Storage&Stability:

Store at 4 °C short term. Aliquot and store at -20 °C long term. Avoid freeze-thaw cycles.

Specificity:

DUSP14 polyclonal antibody detects endogenous levels of DUSP14 protein.

DATA:



Western blot (WB) analysis of DUSP14 polyclonal antibody at 1:500 dilution

Lane1:Hela whole cell lysate

Lane2:Mouse testis tissue lysate

Lane3:Rat testis tissue lysate

Note:

For research use only, not for use in diagnostic procedure.

Bioworld Technology, Inc.

Add: 1660 South Highway 100, Suite 500 St. Louis Park, MN 55416, USA.

Email: info@bioworld.com

Tel: 6123263284

Fax: 6122933841

Bioworld technology, co. Ltd.

Add: No 9, weidi road Qixia District Nanjing, 210046, P. R. China.

Email: info@biogot.com

Tel: 0086-025-68037686

Fax: 0086-025-68035151