

MRP-L28 polyclonal antibody

Catalog: BS60085

Host: Rabbit

Reactivity: Human, Mouse

BackGround:

MRP-L28 (39S ribosomal protein L28, melanoma-associated antigen recognized by T lymphocytes) is a mitochondrial protein that belongs to the ribosomal protein L28P family. MRP-L28 potentially represents an important therapeutic reagent for HLA-A24 (A24) patients as this antigen is recognized by tumor-infiltrating lymphocyte (TIL) 1290, which targets the A24 serotype. HLAA24 (A24) is an HLA-A serotype that identifies the more common HLA-A24 gene products. A24 is a split antigen that is also recognized by the A9 broad antigen type and the similar A23 types. A24 is common in Austronesia and has one of the highest A allele frequencies for a number of peoples, including Papua New Guineans, indigenous Taiwanese (eastern tribals), Yupik and Greenland Eskimos. MRP-L28 is found in a variety of normal tissues including spleen, testis, thymus, liver, kidney, brain, adrenal, lung and retinal tissue.

Product:

Rabbit IgG, 1mg/ml in PBS with 0.02% sodium azide, 50% glycerol, pH7.2

Molecular Weight:

~ 30 kDa

Swiss-Prot:

Q13084

Purification&Purity:

The antibody was affinity-purified from rabbit antiserum by affinity-chromatography using epitope-specific immunogen and the purity is > 95% (by SDS-PAGE).

Applications:

WB: 1:500~1:1000

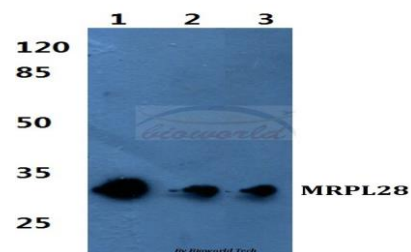
Storage&Stability:

Store at 4 °C short term. Aliquot and store at -20 °C long term. Avoid freeze-thaw cycles.

Specificity:

MRP-L28 polyclonal antibody detects endogenous levels of MRP-L28 protein.

DATA:



Western blot (WB) analysis of MRP-L28 polyclonal antibody at 1:500 dilution

Lane1:MCF-7 whole cell lysate

Lane2:Raw264.7 whole cell lysate

Lane3:H9C2 whole cell lysate

Note:

For research use only, not for use in diagnostic procedure.

Bioworld Technology, Inc.

Add: 1660 South Highway 100, Suite 500 St. Louis Park, MN 55416, USA.

Email: info@bioworld.com

Tel: 6123263284

Fax: 6122933841

Bioworld technology, co. Ltd.

Add: No 9, weidi road Qixia District Nanjing, 210046, P. R. China.

Email: info@biogot.com

Tel: 0086-025-68037686

Fax: 0086-025-68035151