

INPP5E polyclonal antibody

Catalog: BS60090

Host: Rabbit

Reactivity: Human, Mouse, Rat

BackGround:

INPP5E (inositol polyphosphate 5-phosphatase), also known as phosphatidylinositol polyphosphate 5-phosphatase type IV, is a 644 amino acid peripheral membrane protein associated with Golgi stacks. Belonging to the inositol-1,4,5-trisphosphate 5-phosphatase type IV family, INPP5E converts phosphatidylinositol-3,4,5-triphosphate (PtdIns 3,4,5-P3) to PtdIns-P2. While inactive towards water soluble inositol phosphates, the activity of INPP5E is specific for lipid substrates. INPP5E becomes phosphorylated upon DNA damage and is expressed in brain, heart, pancreas, testis and spleen. Defects in INPP5E are the cause of Joubert syndrome type 1 (JBTS1), a disorder presenting with cerebellar ataxia, oculomotor apraxia, hypotonia, neonatal breathing abnormalities and psychomotor delay. In addition, mutations in the INPP5E gene may lead to mental retardation-truncal obesity-retinal dystrophy-micropenis (MORMS), an autosomal recessive disorder characterized by moderate mental retardation, truncal obesity, congenital non-progressive retinal dystrophy, and micropenis in males.

Product:

Rabbit IgG, 1mg/ml in PBS with 0.02% sodium azide, 50% glycerol, pH7.2

Molecular Weight:

~ 72 kDa

Swiss-Prot:

Q9NRR6

Purification&Purity:

The antibody was affinity-purified from rabbit antiserum by affinity-chromatography using epitope-specific immunogen and the purity is > 95% (by SDS-PAGE).

Applications:

WB: 1:500~1:1000

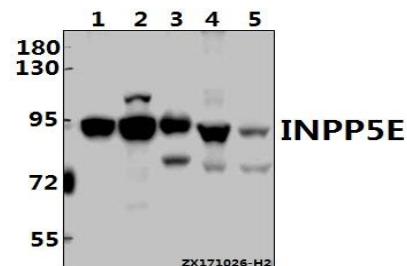
Storage&Stability:

Store at 4 °C short term. Aliquot and store at -20 °C long term. Avoid freeze-thaw cycles.

Specificity:

INPP5E polyclonal antibody detects endogenous levels of INPP5E protein.

DATA:



Western blot (WB) analysis of INPP5E pAb at 1:500 dilution

Lane1:PC3 whole cell lysate(20ug)

Lane2:HEK293T whole cell lysate(20ug)

Lane3:The Heart tissue lysate of Mouse(40ug)

Lane4:The Heart tissue lysate of Rat(40ug)

Lane5:The Testis tissue lysate of Mouse(40ug)

Note:

For research use only, not for use in diagnostic procedure.

Bioworld Technology, Inc.

Add: 1660 South Highway 100, Suite 500 St. Louis Park, MN 55416, USA.

Email: info@bioworld.com

Tel: 6123263284

Fax: 6122933841

Bioworld technology, co. Ltd.

Add: No 9, weidi road Qixia District Nanjing, 210046, P. R. China.

Email: info@biogot.com

Tel: 0086-025-68037686

Fax: 0086-025-68035151