

SLC4A9 polyclonal antibody

Catalog: BS60100

Host: Rabbit

Reactivity: Human, Mouse, Rat

Background:

SLC4A9 Probable apical anion exchanger of the kidney cortex. Belongs to the anion exchanger (TC 2.A.31) family. 3 isoforms of the human protein are produced by alternative splicing. Protein type: Transporter, SLC family; Membrane protein, integral; Transporter; Membrane protein, multi-pass. Cellular Component: apical part of cell; plasma membrane; integral to membrane. Molecular Function: inorganic anion exchanger activity. Biological Process: bicarbonate transport; ion transport; transmembrane transport.

Product:

1mg/ml in PBS with 0.1% Sodium Azide, 50% Glycerol.

Molecular Weight:

~ 108 kDa

Swiss-Prot:

Q96Q91

Purification&Purity:

The antibody was affinity-purified from rabbit antiserum by affinity-chromatography using epitope-specific immunogen and the purity is > 95% (by SDS-PAGE).

Applications:

WB: 1:500~1:1000

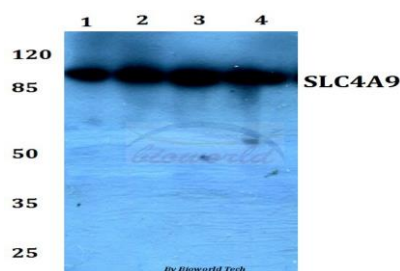
Storage&Stability:

Store at 4 °C short term. Aliquot and store at -20 °C long term. Avoid freeze-thaw cycles.

Specificity:

SLC4A9 polyclonal antibody detects endogenous levels of SLC4A9 protein.

DATA:



Western blot (WB) analysis of SLC4A9 polyclonal antibody at 1:500 dilution

Lane1:Hela whole cell lysate

Lane2:HEK293T whole cell lysate

Lane3:PC12 whole cell lysate

Lane4:sp2/0 whole cell lysate

Note:

For research use only, not for use in diagnostic procedure.

Bioworld Technology, Inc.

Add: 1660 South Highway 100, Suite 500 St. Louis Park, MN 55416, USA.

Email: info@bioworld.com

Tel: 6123263284

Fax: 6122933841

Bioworld technology, co. Ltd.

Add: No 9, weidi road Qixia District Nanjing, 210046, P. R. China.

Email: info@biogot.com

Tel: 0086-025-68037686

Fax: 0086-025-68035151