

MT-ATP8 polyclonal antibody

Catalog: BS60106

Host: Rabbit

Reactivity: Human, Mouse, Rat

BackGround:

Mitochondrial ATP synthase is composed of two multi-subunit complexes that utilize an inner membrane electrochemical gradient to catalyze the synthesis of ATP during oxidative phosphorylation. The two multi-subunit complexes are designated F1 and F0, the former of which comprises the soluble catalytic core and the latter of which comprises the membrane-spanning proton channel of ATP synthase. ATP8, also known as MT-ATP8, ATPASE8 or MTATP8, is a 68 amino acid single-pass membrane protein that localizes to mitochondria and functions as a minor subunit of the F0 complex. The gene encoding ATP8 maps to the mitochondrial chromosome and may be involved in the pathogenesis of multiple sclerosis.

Product:

Rabbit IgG, 1mg/ml in PBS with 0.02% sodium azide, 50% glycerol, pH7.2

Molecular Weight:

~ 8 kDa

Swiss-Prot:

P03928

Purification&Purity:

The antibody was affinity-purified from rabbit antiserum by affinity-chromatography using epitope-specific immunogen and the purity is > 95% (by SDS-PAGE).

Applications:

WB: 1:500~1:1000

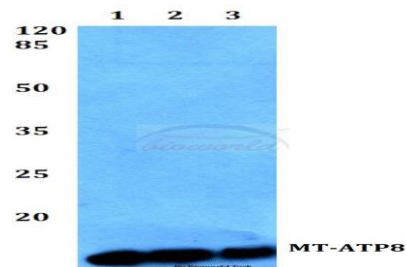
Storage&Stability:

Store at 4 °C short term. Aliquot and store at -20 °C long term. Avoid freeze-thaw cycles.

Specificity:

MT-ATP8 polyclonal antibody detects endogenous levels of MT-ATP8 protein.

DATA:



Western blot (WB) analysis of MT-ATP8 polyclonal antibody at 1:500 dilution

Lane1:HepG2 whole cell lysate

Lane2:Mouse brain tissue lysate

Lane3:Rat stomach tissue lysate

Note:

For research use only, not for use in diagnostic procedure.

Bioworld Technology, Inc.

Add: 1660 South Highway 100, Suite 500 St. Louis Park, MN 55416, USA.

Email: info@bioworld.com

Tel: 6123263284

Fax: 6122933841

Bioworld technology, co. Ltd.

Add: No 9, weidi road Qixia District Nanjing, 210046, P. R. China.

Email: info@biogot.com

Tel: 0086-025-68037686

Fax: 0086-025-68035151