

ABCA9 polyclonal antibody

Catalog: BS60109

Host: Rabbit

Reactivity: Human, Mouse, Rat

BackGround:

ABCA9 (ATP-binding cassette, sub-family A (ABC1), member 9) is a 1,624 amino acid protein belonging to the ABC transporter superfamily and the ABCA family. The ABC1 subfamily is the only major ABC subfamily exclusive to multicellular eukaryotes. Ubiquitously expressed, with high expression in heart, brain and fetal tissues, ABCA9 is a multi-pass membrane protein that contains two ABC transporter domains and exists as five alternatively spliced isoforms. ABCA9 exhibits membrane sub-cellular localization and may play a role in monocyte differentiation and lipid homeostasis. ABCA9 is up-regulated during monocyte differentiation into macrophages and down-regulated by cholesterol loading of macrophages. Spanning 85 kb, ABCA9 contains 39 exons, with a non-coding first exon.

Product:

Rabbit IgG, 1mg/ml in PBS with 0.02% sodium azide, 50% glycerol, pH7.2

Molecular Weight:

~ 184 kDa

Swiss-Prot:

Q8IUA7

Purification&Purity:

The antibody was affinity-purified from rabbit antiserum by affinity-chromatography using epitope-specific immunogen and the purity is > 95% (by SDS-PAGE).

Applications:

WB: 1:500~1:1000

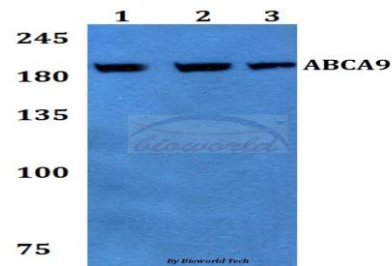
Storage&Stability:

Store at 4 °C short term. Aliquot and store at -20 °C long term. Avoid freeze-thaw cycles.

Specificity:

ABCA9 polyclonal antibody detects endogenous levels of ABCA9 protein.

DATA:

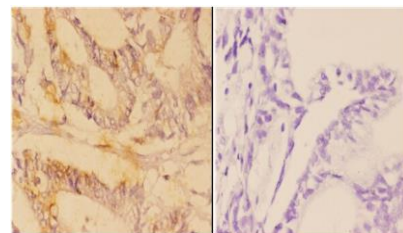


Western blot (WB) analysis of ABCA9 polyclonal antibody at 1:500 dilution

Lane1:HEK293T whole cell lysate

Lane2:Raw264.7 whole cell lysate

Lane3:PC12 whole cell lysate



BS60109
Lot CN21141

Immunohistochemistry (IHC) analyzes of ABCA9 pAb in paraffin-embedded human colon carcinoma tissue at 1:50, showing cytoplasmic and nuclear staining. Negative control (the right) Using PBS instead of primary antibody, secondary antibody is Goat Anti-Rabbit IgG-biotin followed by avidin-peroxidase.

Note:

For research use only, not for use in diagnostic procedure.

Bioworld Technology, Inc.

Add: 1660 South Highway 100, Suite 500 St. Louis Park, MN 55416, USA.

Email: info@bioworld.com

Tel: 6123263284

Fax: 6122933841

Bioworld technology, co. Ltd.

Add: No 9, weidi road Qixia District Nanjing, 210046, P. R. China.

Email: info@biogot.com

Tel: 0086-025-68037686

Fax: 0086-025-68035151