

Desmoglein 3 polyclonal antibody

Catalog: BS60140

Host: Rabbit

Reactivity: Human, Mouse, Rat

BackGround:

Pemphigus is an autoimmune disease of skin adhesion associated with auto-antibodies against a number of keratinocyte antigens, such as the adhesion molecules desmoglein (dsg) 1 and 3 and acetylcholine receptors. Desmogleins, Type I membrane proteins, are important for cell adhesion and are expressed in great abundance at the desmosomes, which are adhesive cell junctions. Desmogleins belong to the cadherin family and consist of dsg1, dsg2 and dsg3. Calcium binds to the putative calcium binding sites at the extracellular N-terminal domain, which has cadherin-like repeats. Unlike normal human keratinocytes, squamous cell carcinoma cells exhibit diminished or un-usual expression of dsg3 and dsg1, which bear pemphigus vulgaris and pemphigus foliaceus antigens, respectively. Several carcinoma cell lines constantly express dsg2 and dsg3 mRNA, whereas cultured normal human keratinocytes always express dsg1 and dsg3 mRNA, with or without dsg2 mRNA. This expression pattern indicates that desmoglein isoforms exhibit abnormal expression and may be related to tumor cell kinetics, such as cell invasion and metastasis. dsg2 is the fundamental dsg common to all desmosome-possessing tissues and is the largest desmoglein in the family.

Product:

1mg/ml in PBS with 0.1% Sodium Azide, 50% Glycerol.

Molecular Weight:

~ 108 kDa

Swiss-Prot:

P32926

Purification&Purity:

The antibody was affinity-purified from rabbit antiserum by affinity-chromatography using epitope-specific immunogen and the purity is > 95% (by SDS-PAGE).

Applications:

WB: 1:500~1:1000

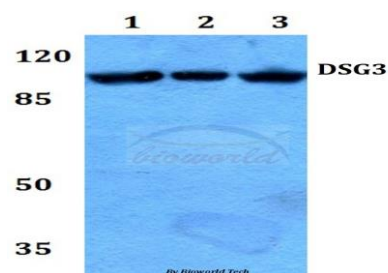
Storage&Stability:

Store at 4 °C short term. Aliquot and store at -20 °C long term. Avoid freeze-thaw cycles.

Specificity:

Desmoglein 3 polyclonal antibody detects endogenous levels of Desmoglein 3 protein.

DATA:



Western blot (WB) analysis of Desmoglein 3 polyclonal antibody at 1:500 dilution

Lane1:Hela whole cell lysate

Lane2:Raw264.7 whole cell lysate

Lane3:PC12 whole cell lysate

Note:

For research use only, not for use in diagnostic procedure.

Bioworld Technology, Inc.

Add: 1660 South Highway 100, Suite 500 St. Louis Park, MN 55416, USA.

Email: info@bioworld.com

Tel: 6123263284

Fax: 6122933841

Bioworld technology, co. Ltd.

Add: No 9, weidi road Qixia District Nanjing, 210046, P. R. China.

Email: info@biogot.com

Tel: 0086-025-68037686

Fax: 0086-025-68035151