

## MAL polyclonal antibody

Catalog: BS60179

Host: Rabbit

Reactivity: Human, Mouse, Rat

### BackGround:

The MAL-SRF interaction displays the predicted properties of a Rho-regulated SRF cofactor. MAL is predominantly cytoplasmic in serum-starved cells, but accumulates in the nucleus following serum stimulation. Activation of the Rho-actin signaling pathway is necessary and sufficient to promote MAL nuclear accumulation. MAL N-terminal sequences, including two RPEL motifs, are required for the response to signaling, while other regions mediate its nuclear export (or cytoplasmic retention) and nuclear import. MAL associates with unpolymerized actin through its RPEL motifs. Constitutively cytoplasmic MAL derivatives interfere with MAL redistribution and Rho-actin signaling to SRF.

### Product:

Rabbit IgG, 1mg/ml in PBS with 0.02% sodium azide, 50% glycerol, pH7.2

### Molecular Weight:

~ 16 kDa

### Swiss-Prot:

P21145

### Purification&Purity:

The antibody was affinity-purified from rabbit antiserum by affinity-chromatography using epitope-specific immunogen and the purity is > 95% (by SDS-PAGE).

### Applications:

WB: 1:500~1:1000

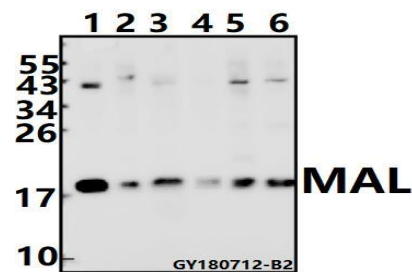
### Storage&Stability:

Store at 4 °C short term. Aliquot and store at -20 °C long term. Avoid freeze-thaw cycles.

### Specificity:

MAL pAb detects endogenous levels of MAL protein.

### DATA:



Western blot (WB) analysis of MAL pAb at 1:500 dilution

Lane1: Myla2059 whole cell lysate(40ug)

Lane2: HuT78 whole cell lysate(40ug)

Lane3: The Spleen tissue lysate of Rat(40ug)

Lane4: The Spleen tissue lysate of Mouse(40ug)

Lane5: AML-12 whole cell lysate(40ug)

Lane6: CT26 whole cell lysate(40ug)

### Note:

For research use only, not for use in diagnostic procedure.

### Bioworld Technology, Inc.

Add: 1660 South Highway 100, Suite 500 St. Louis Park, MN 55416, USA.

Email: [info@bioworld.com](mailto:info@bioworld.com)

Tel: 6123263284

Fax: 6122933841

### Bioworld technology, co. Ltd.

Add: No 9, weidi road Qixia District Nanjing, 210046, P. R. China.

Email: [info@biogot.com](mailto:info@biogot.com)

Tel: 0086-025-68037686

Fax: 0086-025-68035151