

Nephrocystin-1 polyclonal antibody

Catalog: BS60189

Host: Rabbit

Reactivity: Human, Mouse, Rat

BackGround:

Juvenile nephronophthisis type 1 is caused by mutations of NPHP1, the gene encoding for nephrocystin. Nephrocystin interacts with p130Cas (BCAR1), proline-rich tyrosine kinase-2 (PTK2B or Pyk2), and tensin in embryonic kidney and testis, indicating that these proteins participate in a common signaling pathway. Nephrocystin and p130Cas interact in mammalian cells and both proteins prominently localize at or near sites of cell-cell contact in polarized Madin-Darby canine kidney epithelial cells. Expression of nephrocystin results in phosphorylation of Pyk2 on Tyrosine 402 as well as activation of downstream mitogen-activated protein kinases, such as ERK1 and ERK2. Nephrocystin contains a src-homology 3 (SH3) domain, which is highly conserved throughout evolution.

Product:

Rabbit IgG, 1mg/ml in PBS with 0.02% sodium azide, 50% glycerol, pH7.2

Molecular Weight:

~ 83 kDa

Swiss-Prot:

O15259

Purification&Purity:

The antibody was affinity-purified from rabbit antiserum by affinity-chromatography using epitope-specific immunogen and the purity is > 95% (by SDS-PAGE).

Applications:

WB: 1:500~1:1000

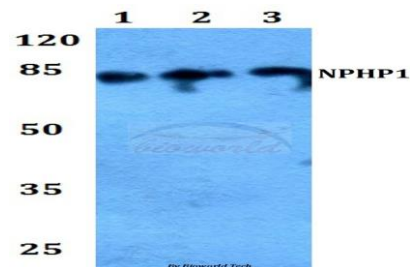
Storage&Stability:

Store at 4 °C short term. Aliquot and store at -20 °C long term. Avoid freeze-thaw cycles.

Specificity:

Nephrocystin-1 polyclonal antibody detects endogenous levels of Nephrocystin-1 protein.

DATA:



Western blot (WB) analysis of Nephrocystin-1 polyclonal antibody at 1:500 dilution

Lane1:Hela whole cell lysate

Lane2:Raw264.7 whole cell lysate

Lane3:H9C2 whole cell lysate

Note:

For research use only, not for use in diagnostic procedure.

Bioworld Technology, Inc.

Add: 1660 South Highway 100, Suite 500 St. Louis Park, MN 55416, USA.

Email: info@bioworld.com

Tel: 6123263284

Fax: 6122933841

Bioworld technology, co. Ltd.

Add: No 9, weidi road Qixia District Nanjing, 210046, P. R. China.

Email: info@biogot.com

Tel: 0086-025-68037686

Fax: 0086-025-68035151