

PRRX2 polyclonal antibody

Catalog: BS60199

Host: Rabbit

Reactivity: Human, Mouse, Rat

BackGround:

The paired-class homeobox genes PRX1 and PRX2 are necessary for craniofacial and limb development and are expressed in similar patterns in the cranial mesenchyme, limb buds, axial mesoderm and branchial arches. These proteins exhibit different patterns of expression, however, in heart and brain tissue. Specifically, PRX1 is expressed in the endocardial cushions, semilunar and atrioventricular valves, whereas PRX2 is initially expressed in a diffuse myocardial pattern and is later expressed in the ventricular septum. Furthermore, PRX2 is never expressed in the brain, whereas PRX1 is expressed in the ventral hypothalamus and in the telencephalon. Murine mutants lacking PRX1 function demonstrate skeletal defects in the skull, limbs, and vertebral column. Mice lacking functional PRX2 alone do not demonstrate skeletal abnormalities, however, PRX1/PRX2 double mutants demonstrate novel abnormalities that are not visualized with the PRX1-deficient mice. Transcripts of neither PRX1 nor PRX2 are detected in normal adult rat pulmonary arteries, however vascular disease induces PRX gene expression wherein they co-localize to sites of Tenascin-C expression.

Product:

Rabbit IgG, 1mg/ml in PBS with 0.02% sodium azide, 50% glycerol, pH7.2

Molecular Weight:

~ 27 kDa

Swiss-Prot:

Q99811

Purification&Purity:

The antibody was affinity-purified from rabbit antiserum by affinity-chromatography using epitope-specific immunogen and the purity is > 95% (by SDS-PAGE).

Applications:

WB: 1:500~1:1000

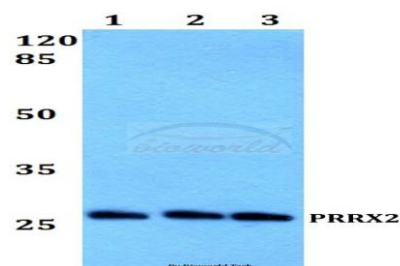
Storage&Stability:

Store at 4 °C short term. Aliquot and store at -20 °C long term. Avoid freeze-thaw cycles.

Specificity:

PRRX2 polyclonal antibody detects endogenous levels of PRRX2 protein.

DATA:



Western blot (WB) analysis of PRRX2 polyclonal antibody at 1:500 dilution

Lane1:HEK293T whole cell lysate

Lane2:sp2/0 whole cell lysate

Lane3:PC12 whole cell lysate

Note:

For research use only, not for use in diagnostic procedure.

Bioworld Technology, Inc.

Add: 1660 South Highway 100, Suite 500 St. Louis Park, MN 55416, USA.

Email: info@bioworld.com

Tel: 6123263284

Fax: 6122933841

Bioworld technology, co. Ltd.

Add: No 9, weidi road Qixia District Nanjing, 210046, P. R. China.

Email: info@biogot.com

Tel: 0086-025-68037686

Fax: 0086-025-68035151