

## PLSCR1 polyclonal antibody

Catalog: BS60203

Host: Rabbit

Reactivity: Human, Mouse, Rat

### BackGround:

The calcium-dependent plasma membrane protein phospholipid scramblase 1 (PLSCR1) contributes to the transbilayer movement of phosphatidylserine and other membrane phospholipids upon influx of calcium into the cytosol. This movement results in plasma membrane phospholipid remodeling and surface exposure of phosphatidylserine in injured or apoptotic cells, which leads to cell death. Interferons and other cytokines induce expression of PLSCR1, implying that PLSCR1 also functions in cytokine signaling pathways. EGF stimulation results in tyrosine phosphorylation of PLSCR1 on tyrosines 69 and 74, which allows it to interact with Shc, and thereby connecting Src kinase activation to stimulation of the EGF receptor.

### Product:

Rabbit IgG, 1mg/ml in PBS with 0.02% sodium azide, 50% glycerol, pH7.2

### Molecular Weight:

~ 40 kDa

### Swiss-Prot:

O15162

### Purification&Purity:

The antibody was affinity-purified from rabbit antiserum by affinity-chromatography using epitope-specific immunogen and the purity is > 95% (by SDS-PAGE).

### Applications:

WB: 1:500~1:1000

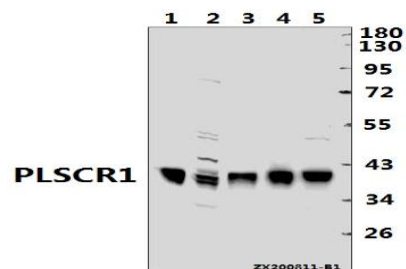
### Storage&Stability:

Store at 4 °C short term. Aliquot and store at -20 °C long term. Avoid freeze-thaw cycles.

### Specificity:

PLSCR1 polyclonal antibody detects endogenous levels of PLSCR1 protein.

### DATA:



Western blot (WB) analysis of PLSCR1 pAb at 1:500 dilution

Lane1:H9C2 whole cell lysate(40ug)

Lane2:CT26 whole cell lysate(40ug)

Lane3:HepG2 whole cell lysate(40ug)

Lane4:HCT116 whole cell lysate(40ug)

Lane5:A549 whole cell lysate(40ug)

### Note:

For research use only, not for use in diagnostic procedure.

### Bioworld Technology, Inc.

Add: 1660 South Highway 100, Suite 500 St. Louis Park, MN 55416, USA.

Email: [info@bioworld.com](mailto:info@bioworld.com)

Tel: 6123263284

Fax: 6122933841

### Bioworld technology, co. Ltd.

Add: No 9, weidi road Qixia District Nanjing, 210046, P. R. China.

Email: [info@biogot.com](mailto:info@biogot.com)

Tel: 0086-025-68037686

Fax: 0086-025-68035151