

## CD42c polyclonal antibody

Catalog: BS60205

Host: Rabbit

Reactivity: Human, Mouse, Rat

### BackGround:

CD42a is a single-chain membrane glycoprotein that forms a noncovalent complex with CD42b. CD42b, also known as glycoprotein Ib a (GPIb a) is a membrane glycoprotein that is composed of a and b chains. The CD42b b chain is also designated CD42c, and is expressed on platelets and megakaryocytes. CD42a and CD42b are also present on platelets and mega-karyocytes, and the complex is a major component of the platelet surface. The complex acts as a receptor for von Willebrand's factor and as a von Willebrand's factor-dependent adhesion receptor.

### Product:

Rabbit IgG, 1mg/ml in PBS with 0.02% sodium azide, 50% glycerol, pH7.2

### Molecular Weight:

~ 22 kDa

### Swiss-Prot:

P13224

### Purification&Purity:

The antibody was affinity-purified from rabbit antiserum by affinity-chromatography using epitope-specific immunogen and the purity is > 95% (by SDS-PAGE).

### Applications:

WB: 1:500~1:1000

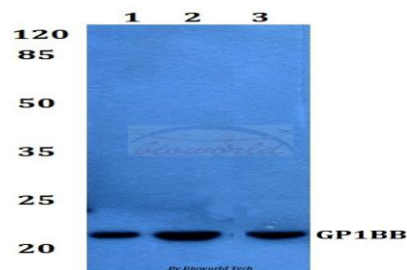
### Storage&Stability:

Store at 4 °C short term. Aliquot and store at -20 °C long term. Avoid freeze-thaw cycles.

### Specificity:

CD42c polyclonal antibody detects endogenous levels of CD42c protein.

### DATA:



Western blot (WB) analysis of GP1BB polyclonal antibody at 1:500 dilution

Lane1:Jurkat whole cell lysate

Lane2:sp2/0 whole cell lysate

Lane3:Rat heart tissue lysate

### Note:

For research use only, not for use in diagnostic procedure.

### Bioworld Technology, Inc.

Add: 1660 South Highway 100, Suite 500 St. Louis Park, MN 55416, USA.

Email: [info@bioworld.com](mailto:info@bioworld.com)

Tel: 6123263284

Fax: 6122933841

### Bioworld technology, co. Ltd.

Add: No 9, weidi road Qixia District Nanjing, 210046, P. R. China.

Email: [info@biogot.com](mailto:info@biogot.com)

Tel: 0086-025-68037686

Fax: 0086-025-68035151