

## SEC61B polyclonal antibody

Catalog: BS60210

Host: Rabbit

Reactivity: Human, Mouse, Rat

### BackGround:

The Sec61 complex forms the core element of the protein translation complex in the rough endoplasmic reticulum membrane. The complex also associates with two ubiquitous ER membrane proteins: Sec62 (also designated human translocation protein 1 or HTP1) and Sec63. The complex forms a two-way channel that transports proteins both into the ER and back to the cytosol for degradation. Specifically, it appears the b subunit facilitates the escort of proteins back to the cytoplasm for degradation by the proteasome or by other proteolytic systems.

### Product:

1 mg/ml in Phosphate buffered saline (PBS) with 0.05% sodium azide, approx. pH 7.2.

### Molecular Weight:

~ 10 kDa

### Swiss-Prot:

P60468

### Purification&Purity:

The antibody was affinity-purified from rabbit antiserum by affinity-chromatography using epitope-specific immunogen and the purity is > 95% (by SDS-PAGE).

### Applications:

WB: 1:500~1:1000

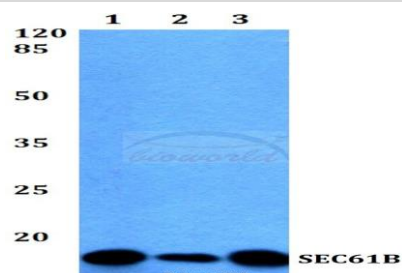
### Storage&Stability:

Store at 4 °C short term. Aliquot and store at -20 °C long term. Avoid freeze-thaw cycles.

### Specificity:

SEC61B polyclonal antibody detects endogenous levels of SEC61B protein.

### DATA:



Western blot (WB) analysis of SEC61B polyclonal antibody at 1:500 dilution

Lane1:HEK293T whole cell lysate

Lane2:Raw264.7 whole cell lysate

Lane3:H9C2 whole cell lysate

### Note:

For research use only, not for use in diagnostic procedure.

### Bioworld Technology, Inc.

Add: 1660 South Highway 100, Suite 500 St. Louis Park, MN 55416, USA.

Email: [info@bioworld.com](mailto:info@bioworld.com)

Tel: 6123263284

Fax: 6122933841

### Bioworld technology, co. Ltd.

Add: No 9, weidi road Qixia District Nanjing, 210046, P. R. China.

Email: [info@biogot.com](mailto:info@biogot.com)

Tel: 0086-025-68037686

Fax: 0086-025-68035151