

SH2B3 polyclonal antibody

Catalog: BS60245

Host: Rabbit

Reactivity: Human, Mouse, Rat

BackGround:

APS (adapter molecule containing PH and SH2 domains), SH2-B and Lnk compose a family of adapter proteins, which contain a pleckstrin homology (PH) domain, an SH2 domain and a tyrosine phosphorylation site. Stimulation of B cell receptor (BCR) or T cell receptor (TCR) results in the phosphorylation of the immunoreceptor tyrosine-based activation motif (ITAM) of BCR, TCR and several substrates. APS, SH2-B and Lnk may bind to the ITAM domain of BCR and TCR. Lnk is tyrosine phosphorylated in response to TCR stimulation and APS has been shown to be tyrosine phosphorylated in response to BCR stimulation.

Product:

Rabbit IgG, 1mg/ml in PBS with 0.02% sodium azide, 50% glycerol, pH7.2

Molecular Weight:

~ 63 kDa

Swiss-Prot:

Q9UQQ2

Purification&Purity:

The antibody was affinity-purified from rabbit antiserum by affinity-chromatography using epitope-specific immunogen and the purity is > 95% (by SDS-PAGE).

Applications:

WB: 1:500~1:1000

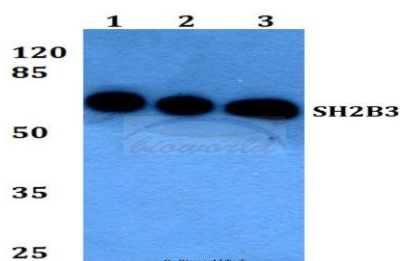
Storage&Stability:

Store at 4 °C short term. Aliquot and store at -20 °C long term. Avoid freeze-thaw cycles.

Specificity:

SH2B3 polyclonal antibody detects endogenous levels of SH2B3 protein.

DATA:



Western blot (WB) analysis of SH2B3 polyclonal antibody at 1:500 dilution

Lane1:HEK293T whole cell lysate

Lane2:Raw264.7 whole cell lysate

Lane3:H9C2 whole cell lysate

Note:

For research use only, not for use in diagnostic procedure.

Bioworld Technology, Inc.

Add: 1660 South Highway 100, Suite 500 St. Louis Park, MN 55416, USA.

Email: info@bioworld.com

Tel: 6123263284

Fax: 6122933841

Bioworld technology, co. Ltd.

Add: No 9, weidi road Qixia District Nanjing, 210046, P. R. China.

Email: info@biogot.com

Tel: 0086-025-68037686

Fax: 0086-025-68035151