

SLC6A18 polyclonal antibody

Catalog: BS60248

Host: Rabbit

Reactivity: Human, Mouse, Rat

BackGround:

The solute carrier (SLC) family, also known as the neurotransmitter transporter family, is one of the largest transporter families in the human genome. The SLC6 subgroup, which includes the dopamine transporter (DAT), the serotonin transporter (SERT) and the norepinephrine transporter (NET), contains sodium/chloride dependent, high-affinity plasma transport proteins. Sodium/chloride-dependent transporter XTRP2, also known as solute carrier family 6 member 18 (SLC6A18), is a 628 amino acid member of the SLC family. XTRP2 is composed of 12 exons, 11 introns and 8 tandem repeats. Highly expressed in the kidney, SLC6A18 is classified as an orphan transporter.

Product:

Rabbit IgG, 1mg/ml in PBS with 0.02% sodium azide, 50% glycerol, pH7.2

Molecular Weight:

~ 71 kDa

Swiss-Prot:

Q96N87

Purification&Purity:

The antibody was affinity-purified from rabbit antiserum by affinity-chromatography using epitope-specific immunogen and the purity is > 95% (by SDS-PAGE).

Applications:

WB: 1:500~1:1000

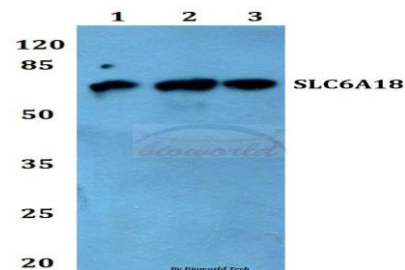
Storage&Stability:

Store at 4 °C short term. Aliquot and store at -20 °C long term. Avoid freeze-thaw cycles.

Specificity:

SLC6A18 polyclonal antibody detects endogenous levels of SLC6A18 protein.

DATA:



Western blot (WB) analysis of SLC6A18 polyclonal antibody at 1:500 dilution

Lane1:THP-1 whole cell lysate

Lane2:Raw264.7 whole cell lysate

Lane3:PC12 whole cell lysate

Note:

For research use only, not for use in diagnostic procedure.

Bioworld Technology, Inc.

Add: 1660 South Highway 100, Suite 500 St. Louis Park, MN 55416, USA.

Email: info@bioworld.com

Tel: 6123263284

Fax: 6122933841

Bioworld technology, co. Ltd.

Add: No 9, weidi road Qixia District Nanjing, 210046, P. R. China.

Email: info@biogot.com

Tel: 0086-025-68037686

Fax: 0086-025-68035151