

SLC9A5 polyclonal antibody

Catalog: BS60250

Host: Rabbit

Reactivity: Human, Mouse, Rat

BackGround:

Na⁺/H⁺ exchangers-1–6 (Na⁺/H⁺ antiporters, NHE-1–6) are integral membrane proteins that are expressed in most mammalian tissues, where they regulate intracellular pH and cell volume. NHEs mediate the secondary active extrusion of hydrogen (H⁺) ions out of cells in exchange for extracellular sodium (Na⁺). Excluding NHE-1, which is ubiquitously expressed, NHE isoforms 2–6 have distinct tissue- and cell type-dependent expression and inhibitory characteristics by amiloride analogs. Human NHE-5 transcript (solute carrier family 9, isoform-5, SLC9A5) is an 896 amino acid protein that is expressed in brain, testis, spleen and skeletal muscle.

Product:

Rabbit IgG, 1mg/ml in PBS with 0.02% sodium azide, 50% glycerol, pH7.2

Molecular Weight:

~ 90 kDa

Swiss-Prot:

Q14940

Purification&Purity:

The antibody was affinity-purified from rabbit antiserum by affinity-chromatography using epitope-specific immunogen and the purity is > 95% (by SDS-PAGE).

Applications:

WB: 1:500~1:1000

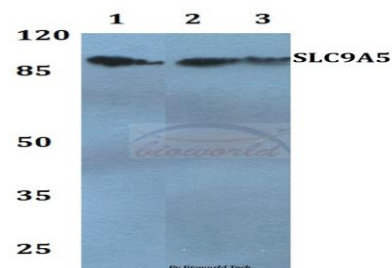
Storage&Stability:

Store at 4 °C short term. Aliquot and store at -20 °C long term. Avoid freeze-thaw cycles.

Specificity:

SLC9A5 polyclonal antibody detects endogenous levels of SLC9A5 protein.

DATA:



Western blot (WB) analysis of SLC9A5 polyclonal antibody at 1:500 dilution

Lane1:HepG2 whole cell lysate

Lane2:NIH-3T3 whole cell lysate

Lane3:Rat brain tissue lysate

Note:

For research use only, not for use in diagnostic procedure.

Bioworld Technology, Inc.

Add: 1660 South Highway 100, Suite 500 St. Louis Park, MN 55416, USA.

Email: info@bioworld.com

Tel: 6123263284

Fax: 6122933841

Bioworld technology, co. Ltd.

Add: No 9, weidi road Qixia District Nanjing, 210046, P. R. China.

Email: info@biogot.com

Tel: 0086-025-68037686

Fax: 0086-025-68035151