

FXYD2 polyclonal antibody

Catalog: BS60253

Host: Rabbit

Reactivity: Human, Mouse, Rat

BackGround:

The human FXYD2 (pronounced fix-id) gene maps to chromosome 11q23 and encodes the gamma subunit of Na/K-ATPase (NKA). FXYD2 γ subunit modulates NKA activity by inducing ion channel activity. The mammalian FXYD family maintains Na⁺ and K⁺ gradients between the intracellular and extracellular milieus of cells in processes such as renal Na⁺-reabsorption, muscle contraction and neuronal excitability. FXYDs are single-span membrane proteins that share a 35 amino acid signature domain, beginning with the sequence PFXYD and containing 7 invariant and 6 conserved amino acids. Other members of the FXYD family include FXYD1 (PLM, phospholemman), FXYD3 (Mat8, mammary tumor protein 8), FXYD4 (CHIF) and FXYD5 (RIC).

Product:

Rabbit IgG, 1mg/ml in PBS with 0.02% sodium azide, 50% glycerol, pH7.2

Molecular Weight:

~ 7 kDa

Swiss-Prot:

P54710

Purification&Purity:

The antibody was affinity-purified from rabbit antiserum by affinity-chromatography using epitope-specific immunogen and the purity is > 95% (by SDS-PAGE).

Applications:

WB: 1:500~1:1000

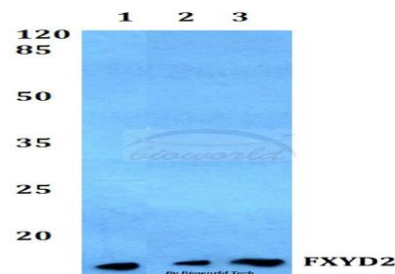
Storage&Stability:

Store at 4 °C short term. Aliquot and store at -20 °C long term. Avoid freeze-thaw cycles.

Specificity:

FXYD2 polyclonal antibody detects endogenous levels of FXYD2 protein.

DATA:



Western blot (WB) analysis of FXYD2 polyclonal antibody at 1:500 dilution

Lane1:HepG2 whole cell lysate

Lane2:Mouse lung tissue lysate

Lane3:Rat brain tissue lysate

Note:

For research use only, not for use in diagnostic procedure.

Bioworld Technology, Inc.

Add: 1660 South Highway 100, Suite 500 St. Louis Park, MN 55416, USA.

Email: info@bioworld.com

Tel: 6123263284

Fax: 6122933841

Bioworld technology, co. Ltd.

Add: No 9, weidi road Qixia District Nanjing, 210046, P. R. China.

Email: info@biogot.com

Tel: 0086-025-68037686

Fax: 0086-025-68035151