

GEMIN2 polyclonal antibody

Catalog: BS60255

Host: Rabbit

Reactivity: Human, Mouse, Rat

Background:

Spinal muscular atrophy (SMA) is an autosomal recessive neurodegenerative disease characterized by loss of motor neurons in the spinal cord. SMA is caused by deletion or loss-of-function mutations in the SMN (survival of motor neuron) gene. Gemin2 (formerly known as SIP1 for SMN interacting protein) associates directly with SMN and is a part of the SMN complex containing Gemin3 (a DEAD-box RNA helicase), Gemin4, Gemin5 and Gemin6, as well as several spliceosomal snRNP proteins. The SMN complex plays an essential role in spliceosomal snRNP assembly in the cytoplasm and is required for pre-mRNA splicing of the nucleus. It is found in both the cytoplasm and the nucleus. The nuclear form is concentrated in subnuclear bodies called gems (Gemini of the coiled bodies). The SMN-Gemin2 complex is associated with spliceosomal snRNAs U1 and U5. Gemin2 is expressed in spinal cord. It can be induced by TGF β treatment and expression is high in several E-cadherin negative human carcinoma cell lines.

Product:

Rabbit IgG, 1mg/ml in PBS with 0.02% sodium azide, 50% glycerol, pH7.2

Molecular Weight:

~ 31 kDa

Swiss-Prot:

O14893

Purification&Purity:

The antibody was affinity-purified from rabbit antiserum by affinity-chromatography using epitope-specific im-

munogen and the purity is > 95% (by SDS-PAGE).

Applications:

WB: 1:500~1:1000

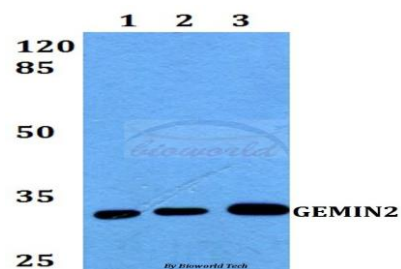
Storage&Stability:

Store at 4 °C short term. Aliquot and store at -20 °C long term. Avoid freeze-thaw cycles.

Specificity:

GEMIN2 polyclonal antibody detects endogenous levels of GEMIN2 protein.

DATA:



Western blot (WB) analysis of GEMIN2 polyclonal antibody at 1:500 dilution

Lane1:A549 whole cell lysate

Lane2:Raw264.7 whole cell lysate

Lane3:H9C2 whole cell lysate

Note:

For research use only, not for use in diagnostic procedure.

Bioworld Technology, Inc.

Add: 1660 South Highway 100, Suite 500 St. Louis Park, MN 55416, USA.

Email: info@bioworld.com

Tel: 6123263284

Fax: 6122933841

Bioworld technology, co. Ltd.

Add: No 9, weidi road Qixia District Nanjing, 210046, P. R. China.

Email: info@biogot.com

Tel: 0086-025-68037686

Fax: 0086-025-68035151