

## LSM2 polyclonal antibody

Catalog: BS60261

Host: Rabbit

Reactivity: Human, Mouse, Rat

### Background:

Sm and Sm-like (LSm) proteins form donut-shaped heptameric complexes that are involved in various steps of RNA metabolism. LSm proteins facilitate RNA-protein interactions and structural changes that are required during ribosomal subunit assembly. The U6 snRNA-associated Sm-like protein LSM2 is also known as small nuclear ribonucleoprotein D homolog SNP3.

### Product:

Rabbit IgG, 1mg/ml in PBS with 0.02% sodium azide, 50% glycerol, pH7.2

### Molecular Weight:

~ 11 kDa

### Swiss-Prot:

Q9Y333

### Purification & Purity:

The antibody was affinity-purified from rabbit antiserum by affinity-chromatography using epitope-specific immunogen and the purity is > 95% (by SDS-PAGE).

### Applications:

WB: 1:500~1:1000

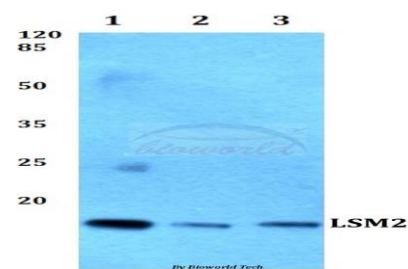
### Storage & Stability:

Store at 4 °C short term. Aliquot and store at -20 °C long term. Avoid freeze-thaw cycles.

### Specificity:

LSM2 polyclonal antibody detects endogenous levels of LSM2 protein.

### DATA:



Western blot (WB) analysis of LSM2 polyclonal antibody at 1:500 dilution

Lane 1: HEK293T whole cell lysate

Lane 2: NIH-3T3 whole cell lysate

Lane 3: PC12 whole cell lysate

### Note:

For research use only, not for use in diagnostic procedure.

### Bioworld Technology, Inc.

Add: 1660 South Highway 100, Suite 500 St. Louis Park, MN 55416, USA.

Email: [info@bioworld.com](mailto:info@bioworld.com)

Tel: 6123263284

Fax: 6122933841

### Bioworld technology, co. Ltd.

Add: No 9, weidi road Qixia District Nanjing, 210046, P. R. China.

Email: [info@biogot.com](mailto:info@biogot.com)

Tel: 0086-025-68037686

Fax: 0086-025-68035151