

DUX5 polyclonal antibody

Catalog: BS60282

Host: Rabbit

Reactivity: Human,Rat

BackGround:

The double homeobox (DUX) proteins are encoded by 3.3-kilobase repeats found throughout the human genome. The DUX family includes DUX1, DUX2, DUX3, DUX4 and DUX5. Each of these family members, excluding DUX2, contains two homeobox domains. DUX2 contains only one homeobox domain. DUX1 and DUX5 are identical to one another and they share 98% identity with DUX3 and approximately 70% identity with DUX2. The genes encoding DUX5 and DUX3 both contain additional start sites that result in N-terminal extended isoforms. The homeodomains found in DUX5 and DUX1 are similar to those found in Pax-3, Pax-7, OTX1 and OTX2. DUX4, also known as DUX10, is capable of forming homodimers. In addition, the gene encoding DUX4 maps within the D4Z4 repeat unit that has been implicated in Facioscapulohumeral muscular dystrophy (FSHD).

Product:

Rabbit IgG, 1mg/ml in PBS with 0.02% sodium azide, 50% glycerol, pH7.2

Molecular Weight:

~ 19 kDa

Swiss-Prot:

Q96PT3

Purification&Purity:

The antibody was affinity-purified from rabbit antiserum by affinity-chromatography using epitope-specific immunogen and the purity is > 95% (by SDS-PAGE).

Applications:

WB: 1:500~1:1000

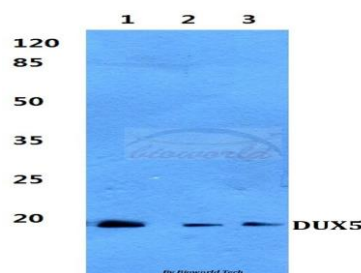
Storage&Stability:

Store at 4 °C short term. Aliquot and store at -20 °C long term. Avoid freeze-thaw cycles.

Specificity:

DUX5 polyclonal antibody detects endogenous levels of DUX5 protein.

DATA:



Western blot (WB) analysis of DUX5 polyclonal antibody at 1:500 dilution

Lane1:HepG2 cell lysate

Lane2:H9C2 cell lysate

Lane3:Rat liver tissue lysate

Note:

For research use only, not for use in diagnostic procedure.

Bioworld Technology, Inc.

Add: 1660 South Highway 100, Suite 500 St. Louis Park, MN 55416, USA.

Email: info@bioworld.com

Tel: 6123263284

Fax: 6122933841

Bioworld technology, co. Ltd.

Add: No 9, weidi road Qixia District Nanjing, 210046, P. R. China.

Email: info@biogot.com

Tel: 0086-025-68037686

Fax: 0086-025-68035151