

IL-22R α 2 polyclonal antibody

Catalog: BS60293

Host: Rabbit

Reactivity: Human, Mouse, Rat

BackGround:

IL-22R α 2 (interleukin-22 receptor α -2 chain), also known as IL-22 binding protein (IL-22BP), cytokine receptor family class II member 10 (CRF2-10) or CRF2 soluble 1 (CRF2-S1), is a soluble, non-signaling single chain receptor for IL-22. It is highly expressed in intestine and lymph nodes and is also found in spleen, kidney and liver. IL-22R α 2 has a cytokine-binding domain that contains two FnIII domains. Its affinity for IL-22 is four- to ten-fold higher than that of the membrane bound IL-22 receptor, however it has a dissociation rate up to 20 times lower. By binding to IL-22, IL-22R α 2 prevents the binding to the IL-22 membrane bound receptor and therefore inhibits IL-22 signaling. This suggests that IL-22R α 2 may be important in regulating inflammatory responses. In addition, IL-22R α 2 can be induced by lipopolysaccharide (LPS).

Product:

Rabbit IgG, 1mg/ml in PBS with 0.02% sodium azide, 50% glycerol, pH7.2

Molecular Weight:

~ 30 kDa

Swiss-Prot:

Q969J5

Purification&Purity:

The antibody was affinity-purified from rabbit antiserum by affinity-chromatography using epitope-specific immunogen and the purity is > 95% (by SDS-PAGE).

Applications:

WB: 1:500~1:1000

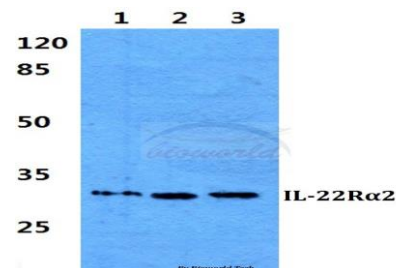
Storage&Stability:

Store at 4 °C short term. Aliquot and store at -20 °C long term. Avoid freeze-thaw cycles.

Specificity:

IL-22R α 2 polyclonal antibody detects endogenous levels of IL-22R α 2 protein.

DATA:



Western blot (WB) analysis of IL-22R α 2 polyclonal antibody at 1:500 dilution

Lane1:MCF-7 cell lysate

Lane2:Mouse heart tissue lysate

Lane3:Rat heart tissue lysate

Note:

For research use only, not for use in diagnostic procedure.

Bioworld Technology, Inc.

Add: 1660 South Highway 100, Suite 500 St. Louis Park, MN 55416, USA.

Email: info@bioworld.com

Tel: 6123263284

Fax: 6122933841

Bioworld technology, co. Ltd.

Add: No 9, weidi road Qixia District Nanjing, 210046, P. R. China.

Email: info@biogot.com

Tel: 0086-025-68037686

Fax: 0086-025-68035151