

## Insulin polyclonal antibody

Catalog: BS60301

Host: Rabbit

Reactivity: Human, Mouse, Rat

### BackGround:

Insulin is one of the major regulatory hormones of intermediate metabolism throughout the body. The biological actions of this hormone involve integration of carbohydrate, protein, and lipid metabolism. Insulin enhances membrane transport of glucose, amino acids, and certain ions. It also promotes glycogen storage, formation of triglycerides and synthesis of proteins and nucleic acids. Immunocytochemical investigations have localized insulin in the B cells of pancreatic islets of Langerhans. Deficiency of insulin results in diabetes mellitus, one of the leading causes of morbidity and mortality in the general population. Insulin is also present in tumors of B cell origin such as insulinoma.

### Product:

Rabbit IgG, 1mg/ml in PBS with 0.02% sodium azide, 50% glycerol, pH7.2

### Molecular Weight:

~ 12 kDa

### Swiss-Prot:

P01308

### Purification&Purity:

The antibody was affinity-purified from rabbit antiserum by affinity-chromatography using epitope-specific immunogen and the purity is > 95% (by SDS-PAGE).

### Applications:

WB: 1:500~1:1000

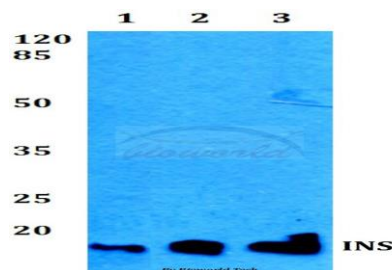
### Storage&Stability:

Store at 4 °C short term. Aliquot and store at -20 °C long term. Avoid freeze-thaw cycles.

### Specificity:

Insulin polyclonal antibody detects endogenous levels of Insulin protein.

### DATA:



Western blot (WB) analysis of Insulin polyclonal antibody at 1:500 dilution

Lane1:A549 whole cell lysate

Lane2:Mouse heart tissue lysate

Lane3:Rat liver tissue lysate

### Note:

For research use only, not for use in diagnostic procedure.

### Bioworld Technology, Inc.

Add: 1660 South Highway 100, Suite 500 St. Louis Park, MN 55416, USA.

Email: [info@bioworld.com](mailto:info@bioworld.com)

Tel: 6123263284

Fax: 6122933841

### Bioworld technology, co. Ltd.

Add: No 9, weidi road Qixia District Nanjing, 210046, P. R. China.

Email: [info@biogot.com](mailto:info@biogot.com)

Tel: 0086-025-68037686

Fax: 0086-025-68035151